



Distributed by:  
Air-Met Scientific Pty Ltd

Air-Met Sales/Service  
P: 1800 000 744  
F: 1800 000 774  
E: sales@airmet.com.au

Air-Met Rental  
P: 1300 137 067  
E: hire@airmet.com.au  
W: www.airmet.com.au

# Cube Smart Noise Monitoring Terminal

ACCURATE, ACTIONABLE  
DATA, ALWAYS



**acoem**  
CREATING ENVIRONMENTS OF POSSIBILITY



At Acoem, our aim is to shorten the path between monitoring and informed action. As a globally recognised provider of class-leading multi-parameter environmental monitoring solutions, we offer our customers a complete range of measurement technologies and services.

For more than 40 years we have been designing and manufacturing integrated solutions that easily adapt to changes in technology, to ensure that your equipment is always up to date and operates with maximum efficiency.

We believe in helping our customers find the right balance between progress and preservation. We empower industries, government, scientists and communities to make knowledgeable decisions based on our accurate and reliable data. Our holistic solutions lead to operational excellence and better outcomes.

**Together, we create environments of possibility.**



**Cube™** is a signature product in Acoem's class-leading and globally trusted suite of noise monitoring solutions. Designed to suit all applications, **Cube** is the most versatile terminal on the market. Mount it in a fixed position or carry it in a portable yet robust weatherproof case. Combining innovative functionality with ease of operation, **Cube** lets you concentrate on data analysis while it takes care of everything else.

# Cube Smart Noise Monitoring Terminal

## The ultimate noise monitoring solution

### FIT FOR PURPOSE DESIGN

By eliminating the traditional cone shape of a sound level meter, Cube fits into a variety of different casings, from a fixed plastic or metal cabinet to a portable weatherproof case.

Antennas (WiFi, GSM & GPS) are easily connected via three accessible ports which can be relocated to the exterior of the casing.

The mounting profile can be attached to a protective DIN rail.

Integrating Cube is a quick and simple process.

### Key Features

- Built-in 4G connectivity (no external modem required)
- IEC 61672-2 class 1 certification for use in multiple countries
- High data transmission speeds
- Automatic publication of accurate, actionable real-time data
- New functionality - transfer both audio & video\* alongside pushed data (\*when a camera is connected)

### ALWAYS CONNECTED... WHENEVER & WHEREVER

With a built-in 4G modem, 802.11 b/g/n WiFi, ethernet and ADSL connections, Cube is connected 24/7.

Responding to all your demands, Cube allows setting changes via a web-based interface and the ability to listen to measured noise in real-time.

With Cube you will always be fully connected to your monitoring projects.

- WiFi access point for straightforward connection
- Low internal battery alert via text message
- Fully integrated with Acoem's proprietary WebMonitoring software
- WebMonitoring software service alarms
- All-in-one weatherproof case
- Certified for use in multiple countries.

## Break the Cycle of Unnecessary Wastage – Future-Proof Your Investment

Acoem designs and manufactures its range of noise monitoring solutions with changing technology in mind. We understand that as a noise monitoring professional, you want the best possible monitoring technology available today plus the ability to future-proof your investment and maximise return on investment.

With communication infrastructure constantly evolving, Acoem will always have an easy upgrade

path ready to enhance your instrument, adding extra years to the working life of your trusted monitoring equipment.

It is part of our commitment to doing “more with less” and creating environments of possibility where our customers learn to upgrade their technology — giving them access to the right data solutions without having to continually buy new hardware.

## The Simplicity of One Ecosystem

By designing our noise monitoring instruments on a single ecosystem, Acoem allows for greater inter-connectivity between devices and components. All our instruments are designed to increase productivity and are based on shared operating principles, a common data processing software platform and similar accessories.

This translates to ease of operation and the ability to quickly adapt between features and models across the Acoem range.

If Cube is your first purchase from the Acoem range, you will appreciate its ease of use, degree of remote controllability, reliable connectivity and the power of its post-processing software.



## We Understand Real-world Noise Monitoring

We based the design of Acoem’s integrated 4G Cube on considerable research and our intrinsic knowledge of how our customers use their instruments in the field.

Noise monitoring in the real world is typically far from glamorous. More often than not, it takes place in dusty, dirty and hard to access places, sometimes in extreme weather and under difficult circumstances.

Safety should always be your primary concern, so with all features accessible via a full-colour interface and built in 4G modem, you can focus on the environment around you and not connections, cables and laptops.

Whether monitoring in situ or by remote access, we understand that actionable, real-time data whenever and wherever it is needed is critical.

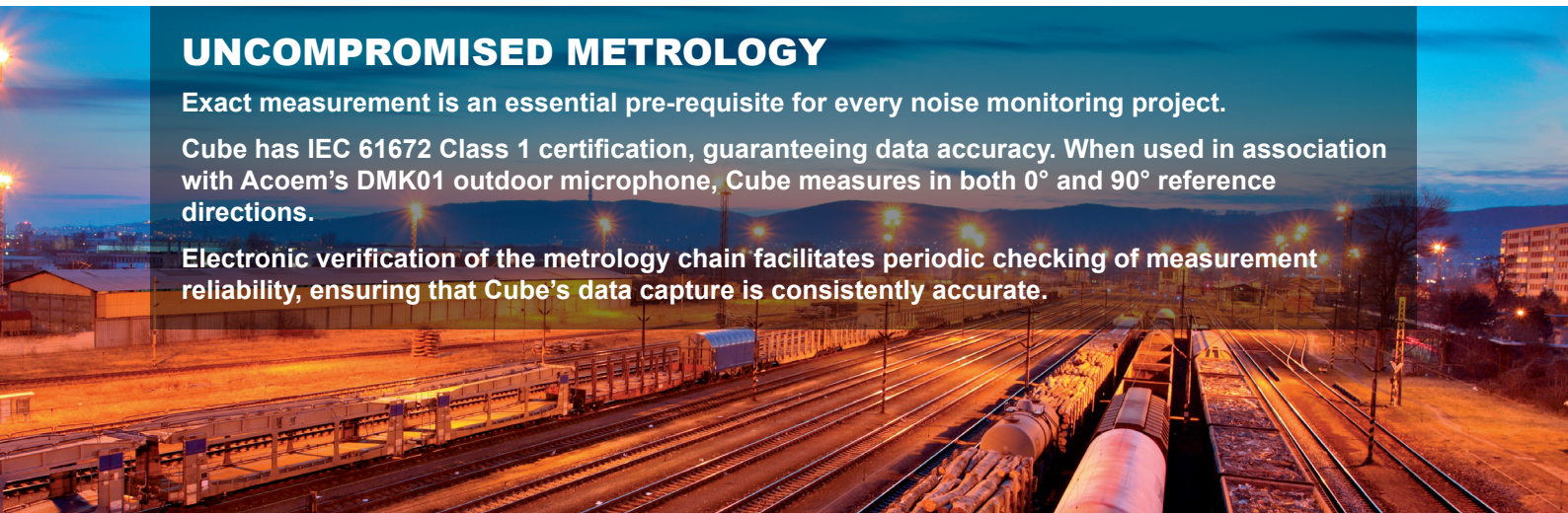
Certified for use in multiple countries around the world, Cube with enhanced mobile connectivity allows measurement data to quickly and efficiently push to online systems, for integration with Acoem’s proprietary WebMonitoring software and customisable web interface.

## UNCOMPROMISED METROLOGY

Exact measurement is an essential pre-requisite for every noise monitoring project.

Cube has IEC 61672 Class 1 certification, guaranteeing data accuracy. When used in association with Acoem’s DMK01 outdoor microphone, Cube measures in both 0° and 90° reference directions.

Electronic verification of the metrology chain facilitates periodic checking of measurement reliability, ensuring that Cube’s data capture is consistently accurate.



## Audio, Video & Data Combined

Detecting and providing information about noise measurement is critical to the monitoring process. With Cube's event detection filtering system, each event generates event markers, signal recordings (MP3 or WAV), SMS notifications and warning lights as required.

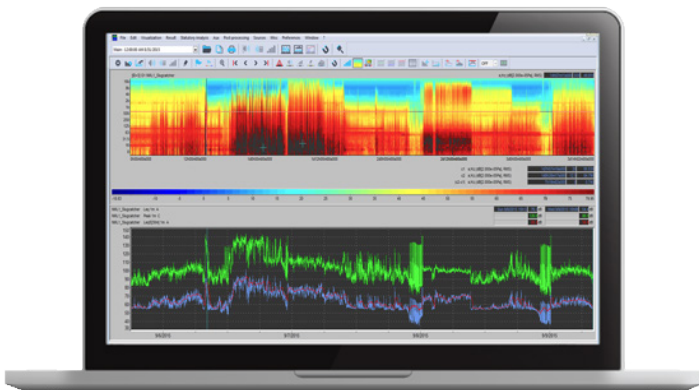
By adding audio and video functionality, Cube lets you not only see the data, but the event that caused it. Recordable audio and video also provide historical back up for regulatory compliance, internal/external reporting, operational assessment or proof of monitoring in legal proceedings.



## Making Your Monitoring Projects Easier

Cube makes monitoring simple - Just press the ON/OFF button to start Cube and initiate measurement. Data published a few minutes later (in PUSH mode) on one or two servers is immediately available for analysis.

Changing settings is just as easy - Connect with Cube via computer or any mobile device to access the remote configuration console. Adjust thresholds, add settings or implement new data publication intervals no matter how far away you are.



## Proprietary Acoem Software

Cube ensures that measurements are metrologically accurate, perfectly structured and sent to your data server on a regular basis.

To meet your diverse project requirements, Acoem offers a selection of software tools (dBTrait, dBFA, etc.) with advanced functionality to visualise, exploit and analyse your data.

Install ACOEM software on multiple devices with no security key needed to process your data seamlessly.

## Acoem WebMonitoring

Using Cube with Acoem WebMonitoring services, your measurement data is available on a customisable full-colour web interface, giving you everything you need for successful monitoring.

- Direct access to high-performance web services
- Secure cloud storage of data
- Online presentation of measurements on a customised interface
- Periodic system verification & maintenance
- Real-time monitoring of alarms.

Together Cube and Acoem WebMonitoring help make the most of your expertise and give you accurate, real-time analysis of your vital monitoring data.



# The Art of Noise Monitoring

## Connected Metrology

- DHCP mode for modem connection
- Connection to WiFi network
- Remote administration via web interface
- Remote signal for audio
- IEC 61672 Class 1 (0°/90°)
- DMK01 outdoor unit
- All-weather G.R.A.S. 40CD microphone
- Periodic self-check system based on charge injection
- Advanced noise indicators
- Aircraft noise indicators
- Raw signal recording (metrological WAV or compressed MP3)
- Time synchronisation
- Multi-point synchronised encoding.

## All-In-One

- Built-in WiFi
- Built-in 4G modem
- LAN interface
- Built-in GPS.

## Accessories

Acoem offers a complete range of accessories that complement Cube and helps make it even more efficient to operate, including:

- 30-day battery for greater autonomy
- Weather-proof case
- Solar panel
- 2 or 6 sensor weather station interface.

## High Performance

- Compact & lightweight
- External antennas (GPS, WiFi and 4G)
- DIN rail mounting
- 24-hour backup battery
- Adaptable to all external batteries
- High-capacity SD memory card (128 GB)
- Data processing with dBTrait software.

## Dedicated to Monitoring

- Periodic transmission of data in PUSH mode
- Interface with your software environment
- Compatible with ACOEM WebMonitoring services
- Advanced triggers
- Noise event SMS notification
- Operational problem SMS notification.





## About Acoem

Creating environments of possibility

At Acoem, we create environments of possibility - helping organisations find the right balance between progress and preservation - safeguarding businesses and assets, and maximising opportunities while conserving the planet's resources. We deliver unrivalled, interoperable AI-powered sensors and ecosystems that empower our customers to make enlightened decisions based on accurate information.

Together with 150 distributors, our 800+ employees work across 27 offices, 5 manufacturing facilities and 3 R&D centres in 11 countries to provide trusted, holistic data solutions for customers worldwide.

**Acoem links possibilities with protection.**

For more information, please visit [acoem.com](https://acoem.com)

