



ProDSS

MULTIPARAMETER WATER QUALITY FIELD INSTRUMENT

CATALOG
W86-04



Distributed by:
Air-Met Scientific Pty Ltd
Air-Met Sales/Service
P: 1800 000 744
F: 1800 000 774
E: sales@airmet.com.au

Air-Met Rental
P: 1300 137 067
E: hire@airmet.com.au
W: www.airmet.com.au



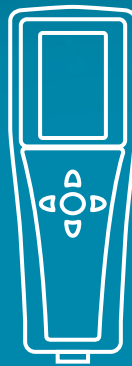
a xylem brand

ProDSS

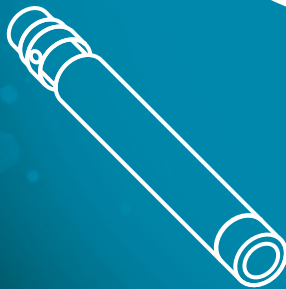
D • I • G • I • T • A • L Sampling System

Customize your **Professional Digital Sampling System** to meet the demands of your water quality monitoring application.

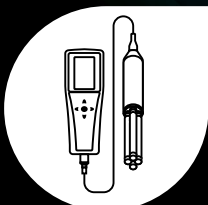
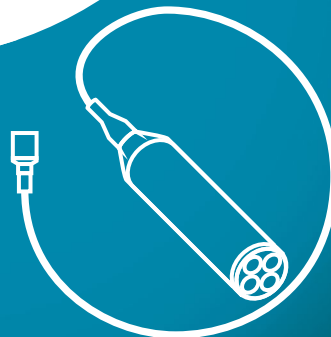
RUGGED



SMART



RELIABLE



With **21 parameter options** and several cable configurations to choose from, the **ProDSS** is ideal for field or lab use in nearly any application: surface water, groundwater, coastal waters, aquaculture, and wastewater.

ProDSS Features

"For spot sampling and profiling this is an excellent multiparameter instrument. The size and functionality knocks it out of the park...now I see the ProDSS as the standard for spot sampling."

ProDSS User



YSI.com/ProDSS



Rugged Handheld

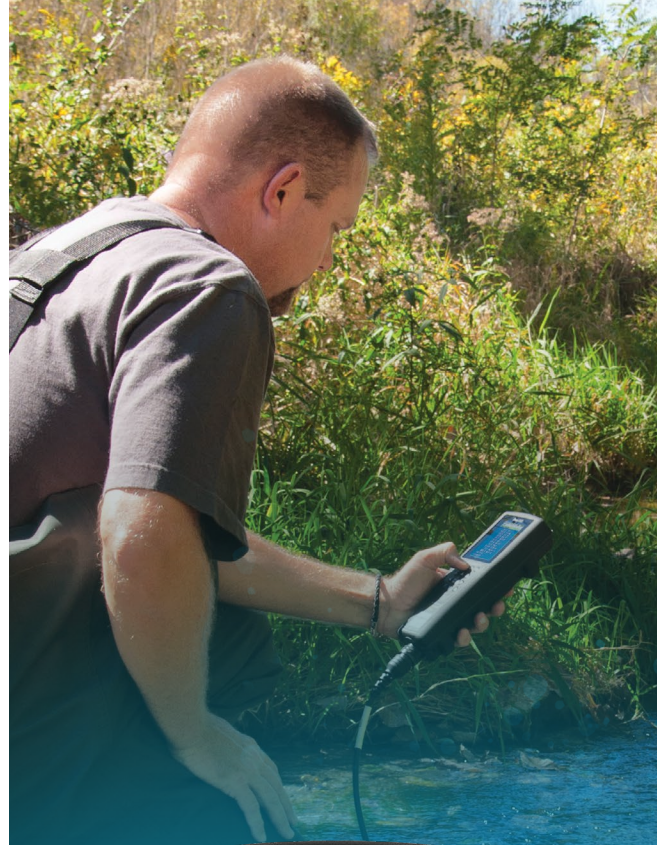
The ProDSS Handheld can withstand the harshest field conditions and handling, with maximum versatility and functionality.



- Easy-to-read color and backlit display can be used in any lighting condition
- Scratch-resistant screen is viewable with polarized glasses
- Long-life rechargeable lithium-ion battery ensures reliability in the field and minimizes waste
- Waterproof (IP-67) rubber over-molded casing
- Simple interface and a dedicated "Help" Button
- Ergonomic design for optimal handling and portability
- Optional GPS for geo-referencing data
- 3-year warranty

"I like the LCD display because of its **ease of use** in low and high light areas... the **increased memory size and speed** are also very nice for logging data."

ProDSS User





Smart Sensors

The 4-Port ProDSS cable uses digital Smart Sensors for fast, easy setup and storage, and highest quality data.



- Universal smart Ports allow any configuration of sensors
- Traceable calibrations stored in sensor – recalibration not required if moved to another port or another instrument
- Sensors are auto-recognized upon installation
- Replaceable sensor modules and ODO cap reduces maintenance and cost of operation
- Highly-ruggedized, welded titanium sensor body
- 2-year warranty

Water Quality Parameters:

Dissolved Oxygen (Optical)	Depth
Turbidity	GPS Coordinates
pH	Ammonium
ORP/Redox	Ammonia
Conductivity	Chloride
Specific Conductance	Nitrate
Salinity	Temperature
Total Dissolved Solids (TDS)	Barometric Pressure
Resistivity	Total Algae
Seawater Density	Chlorophyll
Total Suspended Solids (TSS)	





Reliable Cables

Not just a power cord! ProDSS cables minimize electrical noise and signal degradation over any cable length.

- Single-line design for easy handling in the field
- MS (Military Spec) locking connector for secure connection
- Cable lengths up to 100 meters
- Sensor guard weights for vertical profiling and stability
- 2-year warranty



Multiparameter 4-Port Cable Assembly

- Universal smart ports
- Optional depth sensor



ODO/T and ODO/CT

Probe and Cable Assemblies

- Temperature and ODO in one sensor
- Optional built-in conductivity
- Less than 1-inch diameter
- Rugged ODO sensor cap with 2-year warranty



ProSwap 1-Port Cable Assembly

- Universal smart port
- Built-in temperature sensor
- Optional depth sensor
- Just over 1-inch diameter



ProOBOD Probe and Cable Assembly

- Tapered probe for BOD bottles
- Quiet, self-stirring
- Guarded sensor cap





Powerful Data Management



ProDSS Handheld

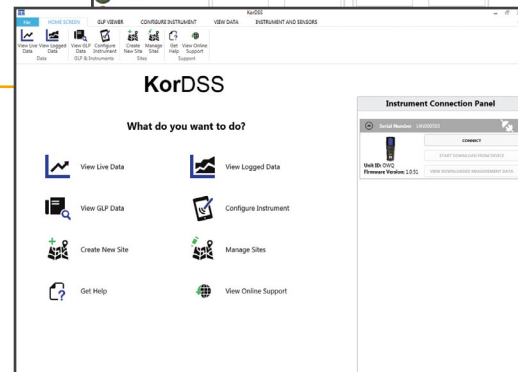
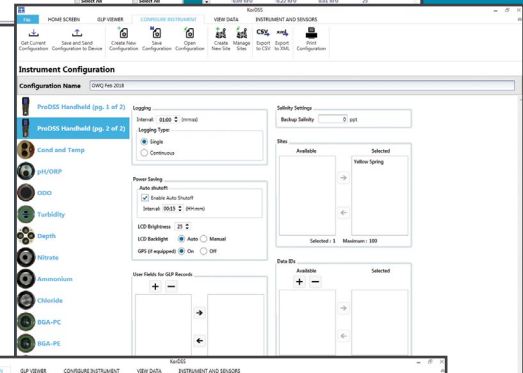
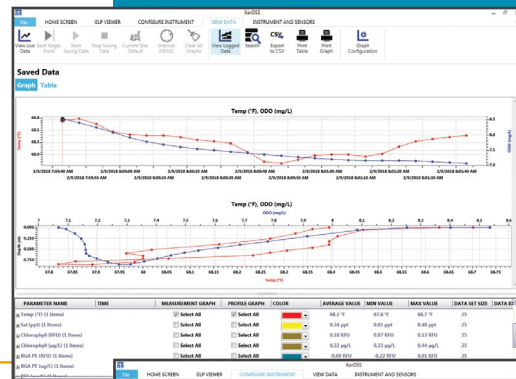
- Store over 100,000 data sets, up to 100 sites, and 100 data tags to the Handheld
- Store up to 400 calibration records
- On-The-Go Micro USB lets you retrieve data anytime with a USB stick

Kor Software

- Powerful Kor Software is included with all systems
- Transfer instrument configurations to multiple Handhelds
- Transport data directly from handheld or USB
- Conduct real-time studies
- Enhance data with site images

"This is the **quickest I've ever collected data** and looked at it in a meaningful fashion without spending a lot of time downloading and formatting."

ProDSS User on Kor Software



ProDSS General Specifications

Auto Stable	User-defined auto-stable function holds stable readings on display when criteria is met
Buffer Recognition	Auto buffer recognition and temperature compensation for US and NIST buffers
Cable Connector	MS (military spec) waterproof with bayonet lock
Calibration Points	1, 2, or 3 point for pH, Turbidity, Ammonium, Nitrate, and Chloride; 1 or 2 point for DO; 1 point for ORP, Barometer, Conductivity, Specific Conductance, Salinity, and Depth
Certifications	CE; RoHS; IP-67; WEEE; FCC; UN Part III, Section 38.3, Test methods for lithium-ion batteries (Class 9)
Connectivity	Built-in micro USB; Cable for PC connection and cable for connection to USB memory stick are included
Data Management	Kor desktop software included; 100 user-defined Data ID tags and 100 Sites with GPS coordinates
Data Memory	>100000 data sets (data, date, time, user-defined info); 100 files
Dimensions	Handheld is 8.3 x 21.6 x 5.6 cm
Display	Color, LCD graphic display; 3.9 x 6.5 cm
GLP Compliance	Yes; 400 detailed GLP records can be stored and are available to view, download and print
GPS	Optional internal GPS; coordinates are stored with measurement data and site lists
Languages	English, Spanish, German, French, Italian, Norwegian, Portuguese, Japanese, Chinese (Simplified & Traditional), Korean, Thai
Logging Modes	Single Point or Continuous
Operating Temperature	0 to 50° C
Password Protection	Calibration menu can be password protected to prevent unauthorized sensor calibration
Battery	Rechargeable lithium-ion battery pack provides ~20 hours with the handheld, 4 port cable and 4 smart sensors; battery recharge time is ~9 hours with the AC power adapter
Storage Temperature	0 to 45° C with battery installed; 0 to 60° C without battery installed
Recalibration Prompt	Provides reminder to recalibrate a ProDSS sensor after user-defined number of days
User ID	Optional user ID for data security
USB Port	Built-in micro USB On-The-Go port for PC connection, recharging/powering the ProDSS and connecting directly to a USB stick
Warranty	3-year; 2-year bulkhead, cable assembly, sensors; and ODO Extended Warranty cap; 1-year pH and pH/ORP sensor modules, ODO sensor caps, and Li-ion battery pack; 6-months ammonium, nitrate, and chloride sensor modules
Waterproof	IP-67; floats
Weight with Batteries (Handheld)	567 grams (1.25 lbs)



"The meter, cable, and sensors are sturdy, **well protected for field work**, **well designed**, and **professional**."

ProDSS User

ProDSS Sensor Specifications

Sensor / Parameter	Range	Resolution	Accuracy
Temperature	-5 to 70 °C (23 to 158°F) Temperature compensation range for DO mg/L measurement: -5 to 50 °C	0.1 °C or 0.1°F	±0.2 °C
pH	0 to 14 pH units	0.01 pH units	±0.2 pH units
ORP	-1999 to 1999 mV	0.1 mV	±20 mV
Dissolved Oxygen	0 to 500%, 0 to 50 mg/L	0.01 mg/L and 0.1%, or 0.1 mg/L and 1% (user selectable)	0 to 200%: ±1% of reading or 1% saturation, whichever is greater 200 to 500%: ±8% of reading 0 to 20 mg/L: ±0.1 mg/L or 1% of reading, whichever is greater 20 to 50 mg/L: ±8% of reading
Barometer	375 to 825 mmHg	0.1mmHg	±1.5 mmHg from 0 to 50 °C
Conductivity	0 to 200 mS/cm	0.001, 0.01 or 0.1 mS/cm (range dependent)	0 to 100 mS/cm: ±0.5% of reading or 0.001 mS/cm, whichever is greater 100 to 200 mS/cm: ±1.0% of reading
Specific Conductance*	0 to 200 mS/cm	0.001, 0.01, 0.1 mS/cm	0 to 100 mS/cm: ±0.5% of reading or 0.001 mS/cm, whichever is greater 100 to 200 mS/cm: ±1.0% of reading. User selectable reference temperature (15 to 25 °C; default 25 °C) and compensation coefficient (0 to 4%/°C; default 1.91%)
Salinity*	0 to 70 ppt	0.01 ppt	±1.0% of reading or ±0.1 ppt, whichever is greater
Total Dissolved Solids (TDS)*	0 to 100 g/L	0.001, 0.01, 0.1 g/L	Calculated from specific conductance and a user-selectable TDS multiplier (0.30 to 1.00; default 0.65)
Resistivity*	0 to 2 Mohms	0.001, 0.01, 0.1 ohms	±0.1% Full Scale
Seawater Density*	0.0 to 50.0 sigma, sigma T	0.1 sigma or sigma T	-
Turbidity	0 to 4000 FNU	0.1 FNU	0 to 999 FNU: 0.3 FNU or ±2% of reading, whichever is greater 1000 to 4000 FNU: ±5% of reading
TAL-Chlorophyll	0 to 100 RFU or 0 to 400 µg/L chl	0.01 RFU or 0.01 µg/L	Linearity: $r^2 \geq 0.999$ for Rhodamine WT across full range
TAL-Phycocyanin	0 to 100 RFU or 0 to 400 µg/L PC		
TAL-Phycoerythrin	0 to 100 RFU or 0 to 400 µg/L PE		
Ammonium**	0 to 200 mg/L NH ₄ -N	0.01 mg/L	±10% of reading or 2 mg/L, whichever is greater
Ammonia*	0 to 200 mg/L NH ₄ -N	0.01 mg/L	±10% of reading or 2 mg/L, whichever is greater
Chloride**	0 to 1000 mg/L Cl	0.01 mg/L	±15% of reading or 5 mg/L, whichever is greater
Nitrate**	0 to 200 mg/L NO ₃ -N	0.01 mg/L	±10% of reading or 2 mg/L, whichever is greater
Depth	0 to 100 m (0 to 328 feet)	0.001 m or 0.001 ft	±0.004 m for 1, 4, and 10 m cables ±0.04 m for cables 20 m and longer

*Derived/calculated parameter

**ISEs for freshwater only; 17-meter maximum depth



Ordering Guide

Step 1: Select Handheld

All handhelds include a rechargeable lithium-ion battery, hand strap, USB cable, universal AC charger, data export cable, Quick Start Guide, and USB memory stick containing Kor Software and digital copy of the User Manual.

- ☐ **626870-1**: ProDSS Handheld
- ☐ **626870-2**: ProDSS Handheld with GPS



Key Features:

- Color display
- 100,000+ data set memory
- Data export to USB flash drive
- Rechargeable battery
- Kor Software

ProDSS Handheld

Step 2: Select Cable Assembly

ProDSS 4-Port Cable Assemblies

Connect any combination of four smart sensors at a time for multiparameter sampling.

- ☐ **626909**: ProDSS 4-port cable; **1, 4, 10, 20, 30, 40, 50, 60, 70, 80, 90, or 100** meter length
- ☐ **626910**: ProDSS 4-port cable with shallow depth sensor; **1, 4, or 10** meter length
- ☐ **626911**: ProDSS 4-port cable with medium depth sensor; **20, 30, 40, 50, 60, 70, 80, 90, or 100** meter length

ProSwap 1-Port Cable Assemblies

Connect a single smart sensor to focus on any parameter of choice. Features built-in temperature sensor.

- ☐ **626750**: ProSwap 1-port cable; **1, 4, 10, 20, 30, 50, or 100** meter length
- ☐ **626760**: ProSwap 1-port cable with shallow depth sensor; **1, 4, or 10** meter length
- ☐ **626770**: ProSwap 1-port cable with medium depth sensor; **20, 30, 50, or 100** meter length

Integrated Probe and Cable Assemblies

Simplify instrument setup with integrated probe and cable assemblies. Available in a variety of parameter-specific options.

- ☐ **627150**: ODO/CT cable with integral optical dissolved oxygen (with pre-installed sensor cap), conductivity, and temperature sensors; **1, 4, 10, 20, 30, 50, or 100** meter length
- ☐ **627200**: ODO/T cable with integral optical dissolved oxygen (with pre-installed sensor cap) and temperature sensors; **1, 4, 10, 20, 30, 50, or 100** meter length
- ☐ **626400**: ProOBOD self-stirring optical BOD probe/cable assembly, lab probe; 115 V; **3** meter length
- ☐ **626401**: ProOBOD self-stirring optical BOD probe/cable assembly, lab probe; 230 V; **3** meter length



4-Port



1-Port



ODO/T

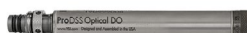


OBOD

Step 3: Select ProDSS Smart Sensor(s) for 4-Port or 1-Port Cables

A conductivity/temperature sensor must be installed in a ProDSS 4-Port cable for temperature compensation.

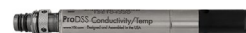
- | | |
|----------------------------------------------------------------------------------|----------------------------------------------------------------------------------------|
| <input type="checkbox"/> 626900 : ODO with pre-installed sensor cap | <input type="checkbox"/> 626905 : Nitrate with pre-installed sensor module |
| <input type="checkbox"/> 626901 : Turbidity | <input type="checkbox"/> 626906 : Ammonium with pre-installed sensor module |
| <input type="checkbox"/> 626902 : Conductivity and temperature | <input type="checkbox"/> 626907 : Chloride with pre-installed sensor module |
| <input type="checkbox"/> 626903 : pH with pre-installed sensor module | <input type="checkbox"/> 626210 : Total algae, PC (chlorophyll + phycocyanin) |
| <input type="checkbox"/> 626904 : pH/ORP with pre-installed sensor module | <input type="checkbox"/> 626211 : Total algae, PE (chlorophyll + phycoerythrin) |



Optical Dissolved Oxygen Sensor



Turbidity Sensor



Conductivity/Temperature Sensor

Protect Your Investment: Add a ProDSS Factory Service Plan

Service Plans optimize the performance and lifetime of your ProDSS meter, 4-port cable, and sensors by cover annual maintenance and replacement parts. Plans offered for 1 to 3 years (U.S. Only).



Conductivity Standard



Turbidity Standard



pH Buffer



Smart, Hard-Sided Carrying Case



Tripod

Step 4: Select Standards

- | | |
|-----------------------------------------------------------------------------------------------|-------------------------------------------------------------------------------------------|
| <input type="checkbox"/> 065270 : Conductivity standard, 1000 umhos/cm (quart) | <input type="checkbox"/> 603824 : 2 pints each of 4, 7, and 10 pH buffers |
| <input type="checkbox"/> 065272 : Conductivity standard, 10000 umhos/cm (quart) | <input type="checkbox"/> 003841 : 1 mg/L ammonium standard (500 mL) |
| <input type="checkbox"/> 065274 : Conductivity standard, 100000 umhos/cm (quart) | <input type="checkbox"/> 003842 : 10 mg/L ammonium standard (500 mL) |
| <input type="checkbox"/> 060907 : Conductivity calibrator, 1000 umhos/cm (8 ea, pint) | <input type="checkbox"/> 003843 : 100 mg/L ammonium standard (500 mL) |
| <input type="checkbox"/> 060906 : Conductivity calibrator, 1413 umhos/cm (8 ea, pint) | <input type="checkbox"/> 003885 : 1 mg/L nitrate standard (500 mL) |
| <input type="checkbox"/> 060911 : Conductivity calibrator, 10000 umhos/cm (8 ea, pint) | <input type="checkbox"/> 003886 : 10 mg/L nitrate standard (500 mL) |
| <input type="checkbox"/> 060660 : Conductivity calibrator, 50000 umhos/cm (8 ea, pint) | <input type="checkbox"/> 003887 : 100 mg/L nitrate standard (500 mL) |
| <input type="checkbox"/> 608000 : Turbidity standard, 0 FNU (1 gallon) | <input type="checkbox"/> 061320 : Zobell standard for ORP (mV) calibration, 125 mL |
| <input type="checkbox"/> 607200 : Turbidity standard, 12.4 FNU (1 gallon) | <input type="checkbox"/> 061321 : Zobell standard for ORP (mV) calibration, 250 mL |
| <input type="checkbox"/> 607300 : Turbidity standard, 124 FNU (1 gallon) | <input type="checkbox"/> 061322 : Zobell standard for ORP (mV) calibration, 500 mL |
| <input type="checkbox"/> 607400 : Turbidity standard, 1010 FNU (1 gallon) | <input type="checkbox"/> 005580 : Confidence Solution® (Conductivity, pH, & ORP)* |

*This solution is only for verification, not calibration.

Step 5: Select Accessories

- | | |
|--------------------------------------------------------------------------------------------------------------------------|--------------------------------------------------------------------------------------------------------------------------------------------------|
| <input type="checkbox"/> 626946 : Large, hard-sided carrying case
(Fits 10, 20, and 30 meter cables) | <input type="checkbox"/> 063517 : Ultra clamp |
| <input type="checkbox"/> 603075 : Large, soft-sided carrying case | <input type="checkbox"/> 603070 : Shoulder strap |
| <input type="checkbox"/> 626945 : Small, hard-sided carrying case
(Fits 1 and 4 meter cables plus a flow cell) | <input type="checkbox"/> 603069 : Belt clip |
| <input type="checkbox"/> 599080 : Flow cell for ProDSS 4-port cables | <input type="checkbox"/> 626918 : 1 lb weight - stackable on guard (A 1 lb. weight is included with ProDSS 4-port cables 10 m and longer) |
| <input type="checkbox"/> 603076 : Flow cell for ODO/CT cables
(requires single port adapter; 603078) | <input type="checkbox"/> 605978 : 4.9 oz weight - stackable on guard |
| <input type="checkbox"/> 603078 : Adapter required for ODO/CT flow cell (603076) | <input type="checkbox"/> 626942 : USB car charger |
| <input type="checkbox"/> 603056 : Flow cell mounting spike | <input type="checkbox"/> 626943 : Small external USB portable battery pack |
| <input type="checkbox"/> 063507 : Tripod | <input type="checkbox"/> 626944 : Large external USB portable battery pack |

Replacement Parts

- | | |
|---------------------------------------------------------------------------------------------------------|---------------------------------------------------------------------------------------------------------------------------|
| <input type="checkbox"/> 626846 : Rechargeable Lithium-ion battery pack | <input type="checkbox"/> 626941 : AC charger (International). Includes power supply, USB cable and outlet adapters |
| <input type="checkbox"/> 626969 : USB flash drive with user manuals and Kor Software | <input type="checkbox"/> 626890 : ODO Sensor cap for ProDSS optical dissolved oxygen sensor (626900) |
| <input type="checkbox"/> 626991 : USB cable for charging and PC connection | <input type="checkbox"/> 627180 : ODO Sensor cap for ODO/CT and ODO/T assemblies |
| <input type="checkbox"/> 626992 : Cable for connection to USB stick | <input type="checkbox"/> 626482 : ODO Sensor cap for ProOBOD assemblies (626400 or 626401) |
| <input type="checkbox"/> 626736 : Cable maintenance kit for ProSwap 1-port cables | <input type="checkbox"/> 626963 : ProDSS pH sensor module (for 626903 sensor) |
| <input type="checkbox"/> 626990 : Cable maintenance kit for ProDSS 4-port cables | <input type="checkbox"/> 626964 : ProDSS pH/ORP sensor module (for 626904 sensor) |
| <input type="checkbox"/> 626740 : Sensor guard kit for ProSwap 1-port cables | <input type="checkbox"/> 626965 : ProDSS Nitrate sensor module (for 626905 sensor) |
| <input type="checkbox"/> 626919 : Sensor guard kit for ProDSS 4-port cables | <input type="checkbox"/> 626966 : ProDSS Ammonium sensor module (for 626906 sensor) |
| <input type="checkbox"/> 626755 : Storage cup for ProSwap 1-port cables | <input type="checkbox"/> 626967 : ProDSS Chloride sensor module (for 626907 sensor) |
| <input type="checkbox"/> 599786 : Calibration/storage cup for ProDSS 4-port cables | |
| <input type="checkbox"/> 627195 : Calibration cup for ODO/CT cables | |
| <input type="checkbox"/> 603062 : Cable management kit | |
| <input type="checkbox"/> 626940 : AC charger (USA). Includes power supply and USB cable (626991) | |

Xylem |'zīləm|

- 1) The tissue in plants that brings water upward from the roots;
- 2) a leading global water technology company.

We're a global team unified in a common purpose: creating advanced technology solutions to the world's water challenges. Developing new technologies that will improve the way water is used, conserved, and re-used in the future is central to our work. Our products and services move, treat, analyze, monitor and return water to the environment, in public utility, industrial, residential and commercial building services settings. Xylem also provides a leading portfolio of smart metering, network technologies and advanced analytics solutions for water, electric and gas utilities. In more than 150 countries, we have strong, long-standing relationships with customers who know us for our powerful combination of leading product brands and applications expertise with a strong focus on developing comprehensive, sustainable solutions.

For more information on how Xylem can help you, go to www.xylem.com



ProDSS
D•I•G•I•T•A•L Sampling System

xylem
Environmental Solutions

YSI, a Xylem brand
1725 Brannum Lane
Yellow Springs, OH 45387

+1.937.767.7241
info@ysi.com
YSI.com

© 2023 Xylem, Inc. W86-04 1023



YSI.com/ProDSS