



Distributed by:  
Air-Met Scientific Pty Ltd

Air-Met Sales/Service  
P: 1800 000 744  
F: 1800 000 774  
E: sales@airmet.com.au

Air-Met Rental  
P: 1300 137 067  
E: hire@airmet.com.au  
W: www.airmet.com.au



**INDUSTRIAL**  
**SCIENTIFIC**

# **T40 II RATTLER™ SINGLE GAS MONITOR** **T-DOCK™ AUTOMATED MANAGEMENT STATION**

The T40 II Rattler™ single gas detector is primarily used to keep personnel safe by detecting the presence of hydrogen sulfide( $H_2S$ ), carbon monoxide (CO) or oxygen ( $O_2$ ), in a serviceable, maintainable, simple to use instrument. The T40 II Rattler™ is the easiest gas detector to service while still making compliance manageable and cost effective with a user-configurable confidence flash. The T40 II Rattler™ is robust and light, with an ingress protection of IP68 and is suitable for working in the most challenging, and hazardous areas. The industrial leading, ultra-fast T90 response time can detect gas hazards on the job in real time, saving valuable time, to ensure worker safety. To meet the needs of long-term operation, the high-performance lithium battery can operate under extreme weather conditions continuously for 2 years.



## SIMPLE, RAPID RESPONSE GAS DETECTION

- Robust, compact, and light
- Fast sensor response
- $O_2$  sensor is warranted for three years
- Replaceable battery with two-year runtime

# RAVIERE

T4-O 1017

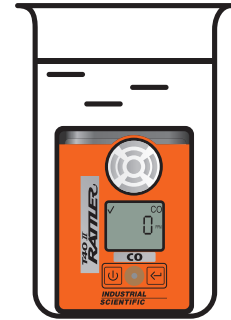




# INGRESS PROTECTION IP66 & IP68



Withstands total dust ingress and high-pressure water jets from any direction.



Completely watertight, even under conditions of prolonged submersion.

**More Reliable  
More Dependable**

# REAL-TIME ALERTS in a COMPACT MONITOR

Regardless of your work environment, the T40 II quickly and clearly alerts you to the presence of gas hazards.

- Cut through high-noise environments with a 95dB audible alarm
- See alerts on two red LED lights and a confidence indicator
- Easily view alerts on a large, backlit LCD screen



# SENSOR and CONFIGURATION OPTIONS

The T40 II offers sensor options for multiple industries and applications, making it a reliable option for personal gas detection.

O<sub>2</sub> sensor is warranted for **3 years**.

CO and H<sub>2</sub>S sensors are warranted for **2 years**.

CO	0-1000 ppm
CO	0-2000 ppm
H <sub>2</sub> S	0-100 ppm
H <sub>2</sub> S	0-200 ppm
H <sub>2</sub> S	0-500 ppm
O <sub>2</sub>	0-30 %vol



# Sensor Options

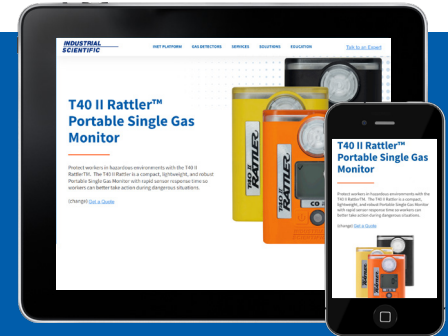
### T40 II COMMON SENSORS BY INDUSTRY

	CO 1000ppm	CO 2000ppm	H <sub>2</sub> S 100ppm	H <sub>2</sub> S 200ppm	H <sub>2</sub> S 500ppm	O <sub>2</sub> 30%vol
Oil and Gas		•	•	•	•	•
Fire and Hazmat	•	•	•	•	•	•
Chemical Refining	•	•	•	•	•	•
Pulp and Paper	•	•	•	•	•	•
Mining	•	•	•	•	•	•
Water	•	•	•	•	•	•

INDUSTRY

**LEARN MORE ABOUT THE T40 II**

[www.indsci.com/t40ii](http://www.indsci.com/t40ii)



# T-DOCK™

## AUTOMATED GAS DETECTOR MANAGEMENT SYSTEM

The TDOCK™ is an intelligent, automated instrument management station for T40 II Rattler™ Single-Gas Monitors.

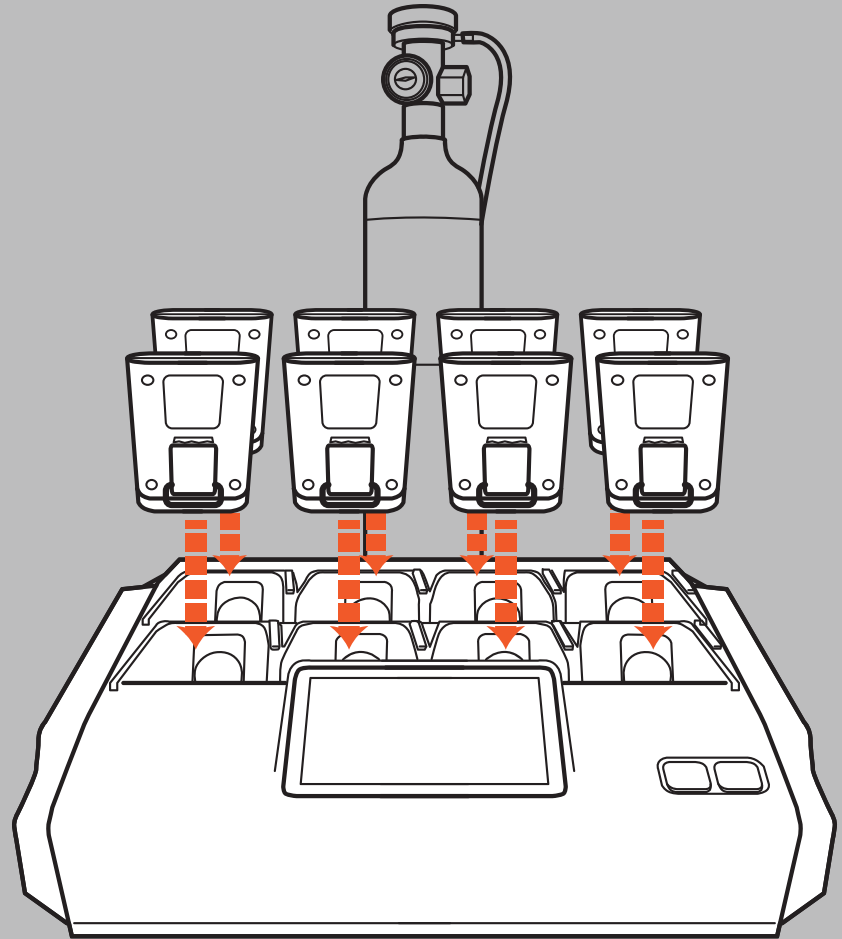
- Maintain up to eight instruments simultaneously
- Bump test T40 II Rattler™ monitors in just 15 seconds
- No training needed - simple interface is intuitive , one button starts all bump tests
- Automate device management with programmable settings
- Enhance productivity and safety with ultra-fast gas monitor maintenance
- Easily download event logs



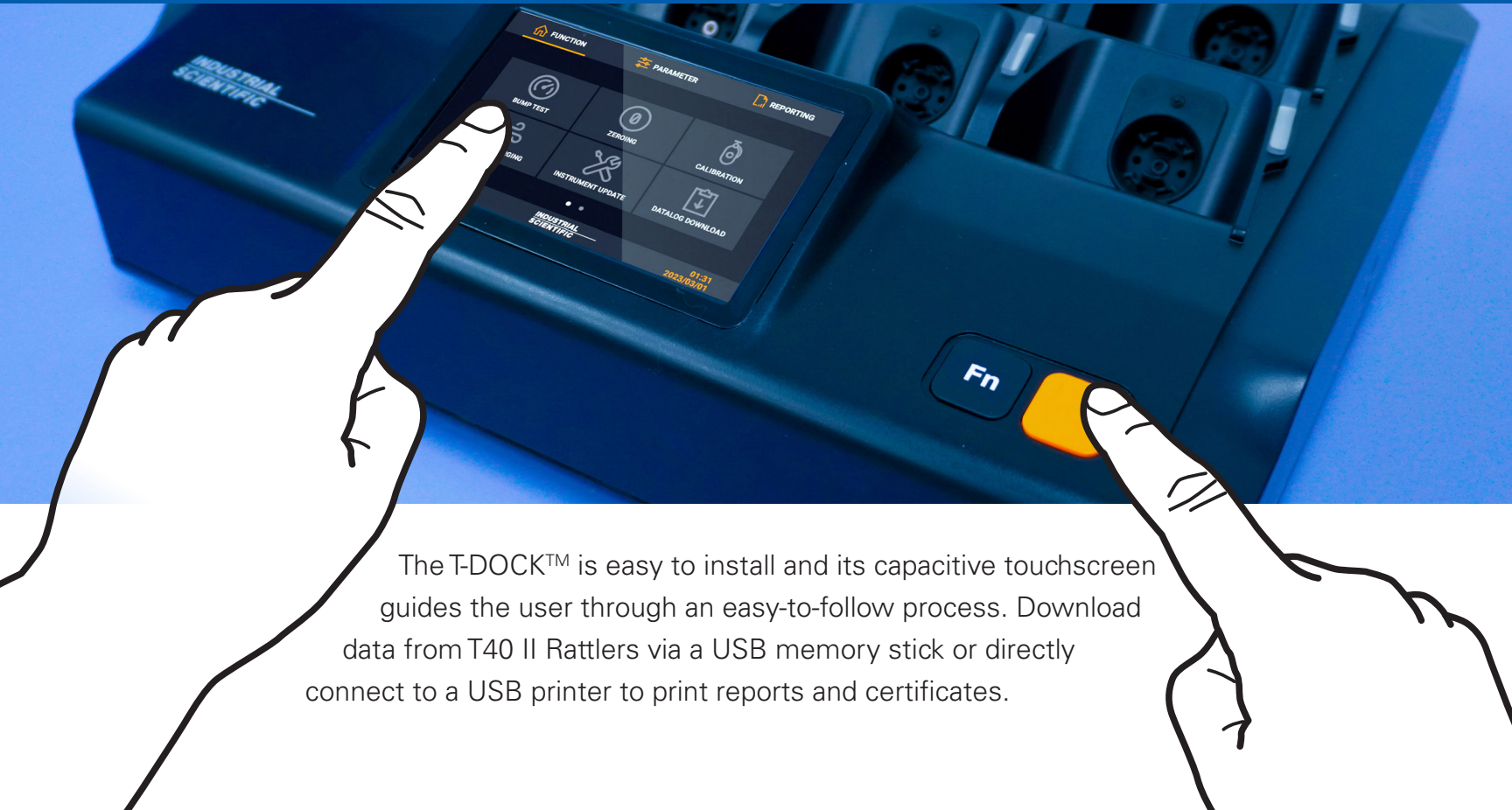


# 8 INSTRUMENTS in 15 SECONDS

The T-DOCK™ offers ultra-fast bump testing capabilities for 8 instruments simultaneously to save space, time, span gas, and enhance productivity for safety teams.



# FRIENDLY INTERFACE BY TOUCHING ONE BUTTON STARTS ALL BUMP TESTS



The T-DOCK™ is easy to install and its capacitive touchscreen guides the user through an easy-to-follow process. Download data from T40 II Rattlers via a USB memory stick or directly connect to a USB printer to print reports and certificates.

# ANYTIME ANYWHERE FULL OF POWER



The T-DOCK™ is ideal for turnarounds, shutdowns, and mobile applications where power outlets are unavailable thanks to a USB-C power bank.



**INDUSTRIAL  
SCIENTIFIC**

[www.indsci.com](http://www.indsci.com)

Rev 0423

**AMERICAS**

Phone: +1-412-788-4353

1-800-DETECTS (338-3287) | [info@indsci.com](mailto:info@indsci.com)

**ASIA PACIFIC**

Phone: +65-6561-7377

Fax: +65-6561-7787 | [info@ap.indsci.com](mailto:info@ap.indsci.com)

**EMEA**

Phone: +33 (0)1 57 32 92 61

Fax: +33 (0)1 57 32 92 67 | [info@eu.indsci.com](mailto:info@eu.indsci.com)