

NEED HELP?



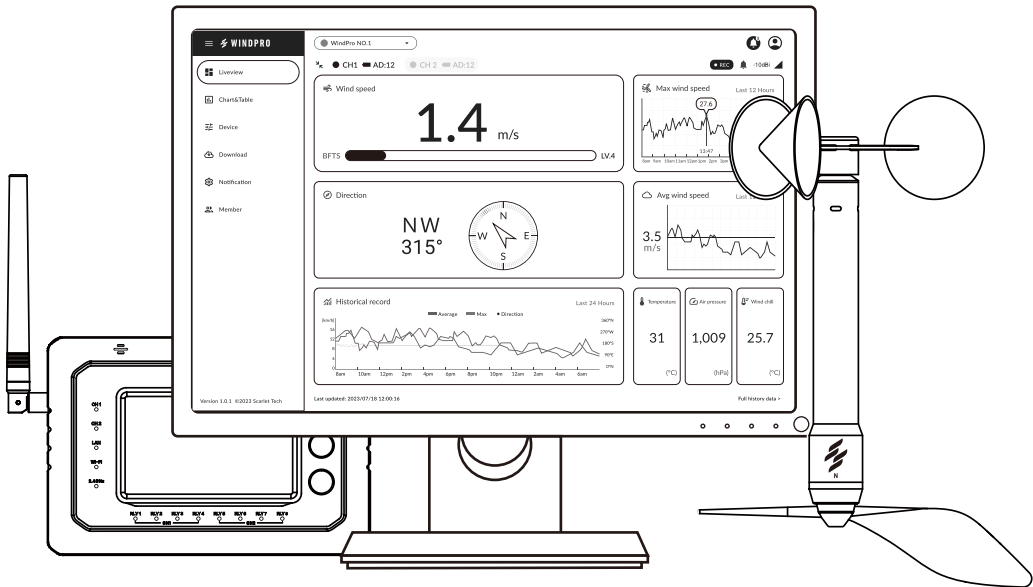
SCAN OR CLICK HERE
TO CONTACT US



Air-Met Scientific
www.airmet.com.au



SCARLET | TECH



WindPro Portal

User Guide

Page Contents

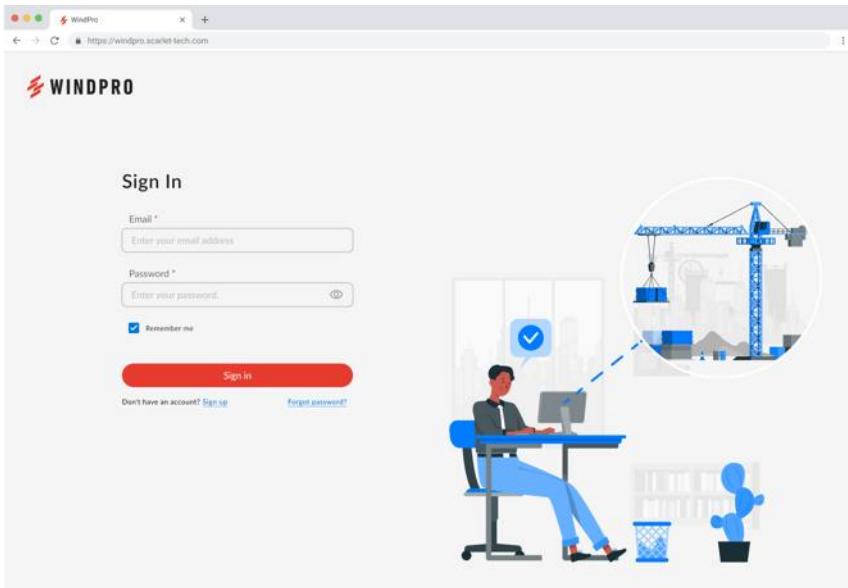
Introduction	2
Scarlet WindPro Web Portal	2
Getting started	3
Sign up	3
Sign in	4
Add a device (License activation)	5
Browser requirements	5
WindPro Portal Home (Liveview)	6
Basic components	6
Monitor WindPro Data	7
Liveview (Single-dual)	8
Device Management	10
Device settings (Display options)	11
Add a License (Apply for another license)	11
Acquire a license code	12
Historical Data	12
Chart	12
Table	13
Data Download	14
Remote Notification Management	15
Notification event trigger source	15
Notification event trigger condition	15
Alert types	15
Event management	16
Add a new event	17
Profile (User Profile)	20
Password reset	20
Team Settings	21
Member management	24

Introduction

■ Scarlet WindPro Web Portal

WindPro Web Portal is a web-based wind data monitoring platform runs in the browsers of modern desktop and tablet devices. It enables remote data access of the WindPro Console that is binded to a Web Portal License. With its intuitive web interface, users can easily browse real-time and historical data in both graph and table formats, and customize notification alerts to stay informed of any critical wind conditions.

Visit <https://windpro.scarlet-tech.com> to get started.

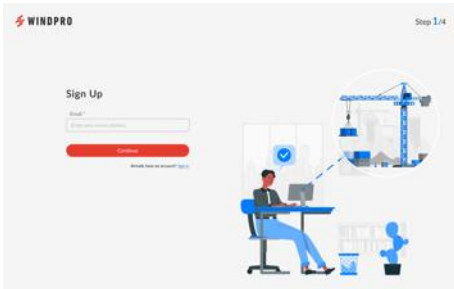


Getting started

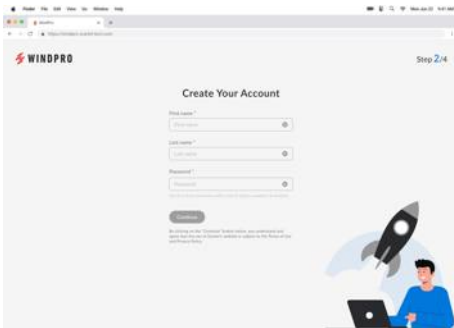
■ Sign up

To register a Web Portal account:

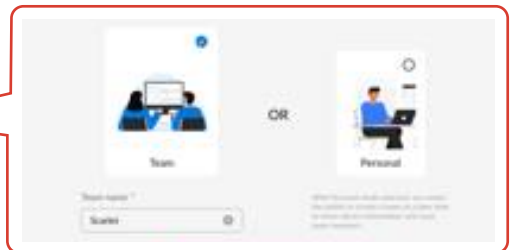
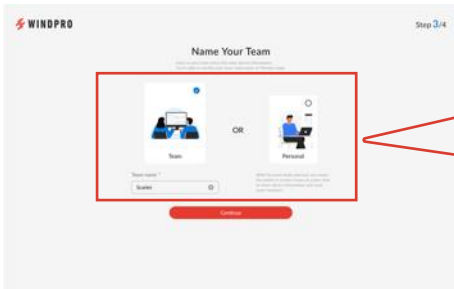
1. Go to <https://windpro.scarlet-tech.com>.
2. Click “Sign up” to register a new account.
3. Enter your email address.



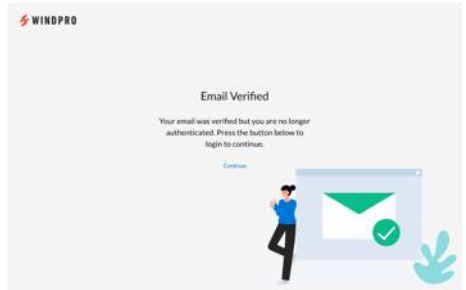
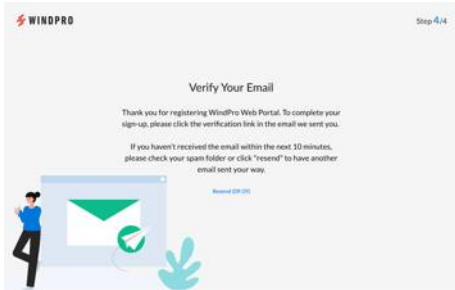
4. Fill out the user information (Name and Password).



5. Set up the user group name. Information can be changed afterward.



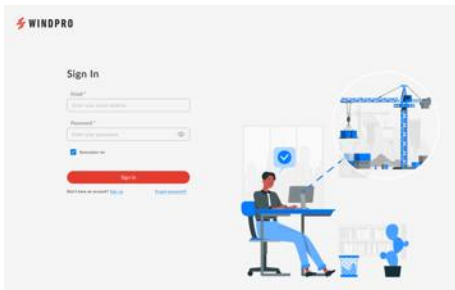
6. A WindPro Web Portal verification email will be sent to your account. Click the verification link to verify your email address.



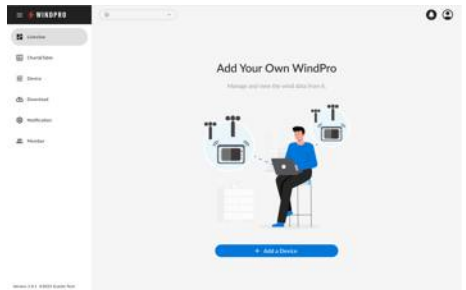
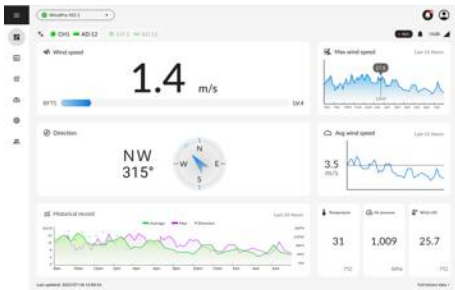
If you have not received the email within 10 minutes, click “Resend” to have another email sent your way.

■ Sign in

1. Go to <https://windpro.scarlet-tech.com>.
2. Enter your Scarlet WindPro Web Portal account email and password.
3. Click “Sign In”.

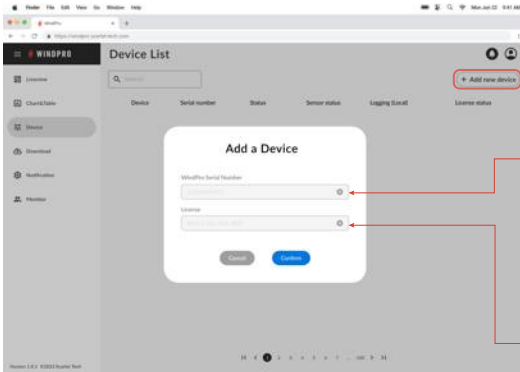


4. After signing in, the page will redirect you to the **WindPro Portal Home (Liveview)** page.



■ Add a device (License activation)

1. Go to Device Management page and click “Add a device” to register a WindPro device.
2. Enter WindPro serial number and license code to activate Scarlet WindPro Web Portal access.



Please note: License code is for one-time activation and is bound to a particular device (WindPro). See how to [acquire a license code](#).

After the device has been added to your team with a specific license, connect the device to the Internet and it will automatically stream data.

Upon successfully registering the WindPro console to your account, it will automatically become associated with your team (user group). As a result, all members of your team (users within the same group) may have access to this device.

■ Browser requirements

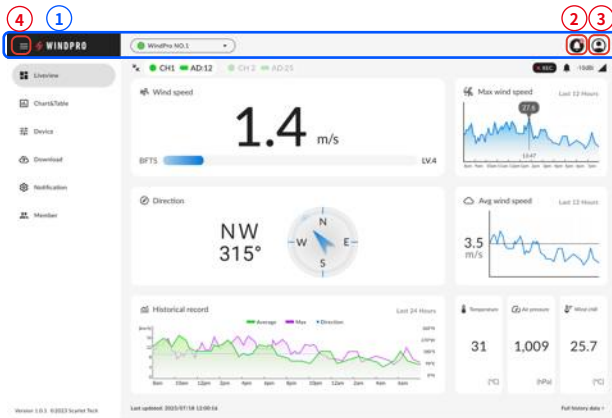
- Please enable JavaScript and Media autoplay permission for the WindPro Web Portal on your browser.
- Add the WindPro Web Portal URL to your browser's allowlist in the settings to use the pop-up notice and sound alert functions.
- Ad blockers may interfere with certain Web Portal's features.

WindPro Portal Home (Liveview)

Once the WindPro Console is connected to the Internet, it continuously transmits all measurement data to the Web Portal.

Basic components

The WindPro Web Portal interface contains several universal interface components that consistently present across between pages, such as portal menu and page header. The figure below labels the fundamental components of the WindPro Web Portal, each of which is described in the following:



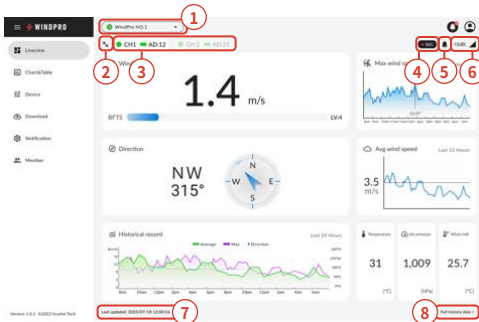
Key Description

- 1. Page header.** Appears at the top of every portal page with universal components.
- 2. Notifications.** Display user-defined alerts and messages.
- 3. Profile.** View information about your account, switch teams, and sign out.
- 4. Portal menu.** Collapsible sidebar to navigate the key functions.

Monitor WindPro Data

Liveview page displays real-time data uploading by WindPro console, users can choose to view data from a one channel or both channels of a specific WindPro.

Single-channel view



Dual-channel view



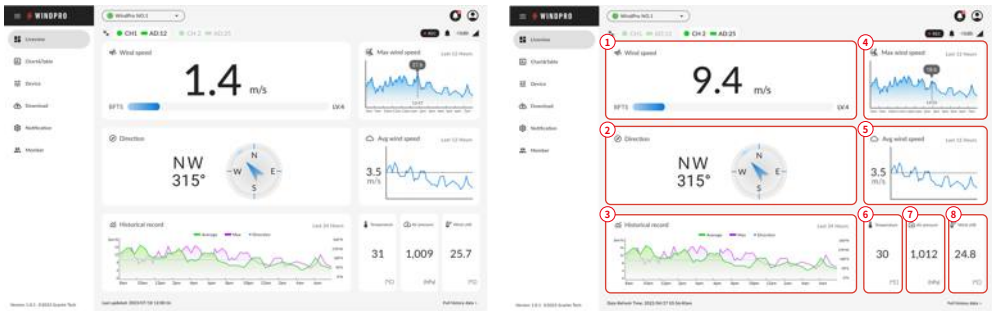
Key Description

- 1. Device selector.** Appear at the top of Liveview, Chart & Table, and Download pages and can select to switch between devices.
- 2. Display view switch.** Click to enlarge to [Single-channel view](#) or reduce to [Dual-channel view](#).
- 3. Channel switch & channel label.** Click to switch between channel 1 view and channel 2 view.
- 4. Device internal logging status.** Show the logging status of each channel of the device itself.
- 5. Device build-in sound alarm status.** Show the sound alarm status of each channel of the device itself.
- 6. Wireless signal strength.** Show wireless signal strength of each channel between sensor and device (WindPro).
- 7. Last data refresh time.** Show the data refresh timestamp.
- 8. Quick access to Chart.** Shortcut link to Chart page to see the past 24 hour data of each channel.

Liveview

Single-channel view

Shows all data from channel 1 or channel 2.

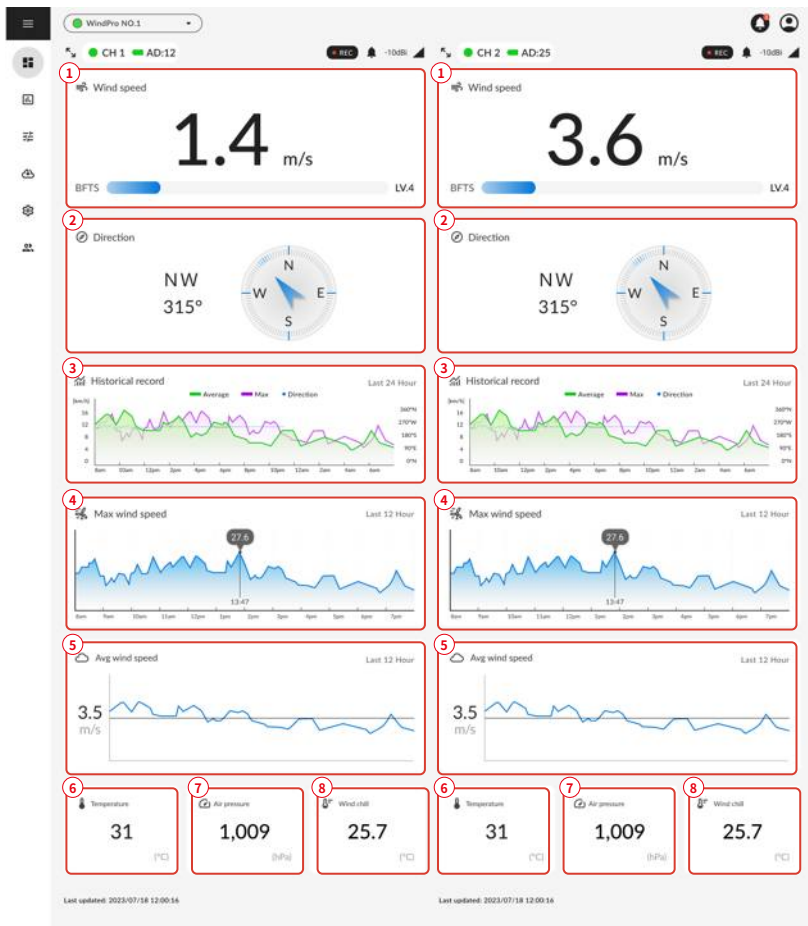


Key Description

- 1. Wind speed.** Show current wind speed value and Beaufort scale. Display unit can be set on device settings.
- 2. Wind direction.** Show current wind direction in both cardinal direction and azimuth angle.
- 3. Historical record.** Show maximum & average wind speed and the prevailing direction in the selected period of the past 24 hours. The period can be set on device settings.
- 4. Max wind speed.** Show maximum wind speed with hourly from the past 12 hours.
- 5. Avg wind speed.** Show average wind speed with hourly from the past 12 hours.
- 6. Temperature.** Show current ambient temperature.
- 7. Air pressure.** Show current air pressure.
- 8. Wind chill.** Show current wind chill index.

Dual-channel view

Shows both channel 1 and channel 2 data, users can switch between single channel view and dual channel view by clicking on the “enlarge” button.

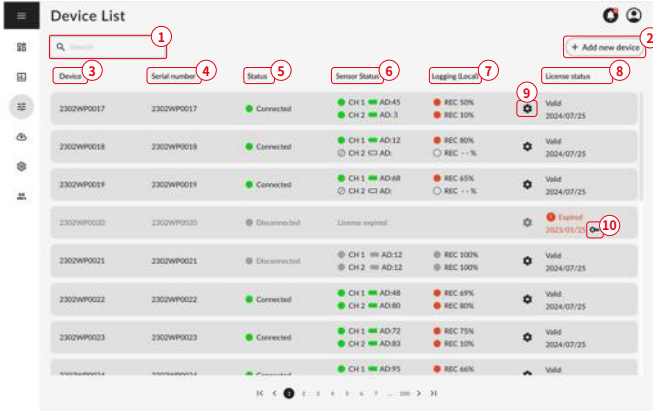


Key Description

- 1. Wind speed.** Show current wind speed value and Beaufort scale. Display unit can be set on device settings.
- 2. Wind direction.** Show current wind direction in both cardinal direction and azimuth angle.
- 3. Historical record.** Show maximum & average wind speed and the prevailing direction in the selected period of the past 24 hours. The period can be set on device settings.
- 4. Max wind speed.** Show maximum wind speed with hourly from the past 12 hours.
- 5. Avg wind speed.** Show average wind speed with hourly from the past 12 hours.
- 6. Temperature.** Show current ambient temperature.
- 7. Air pressure.** Show current air pressure.
- 8. Wind chill.** Show current wind chill index.

Device Management

Once the WindPro Console is connected to the Internet, it continuously transmits all measurement to the Web Portal.

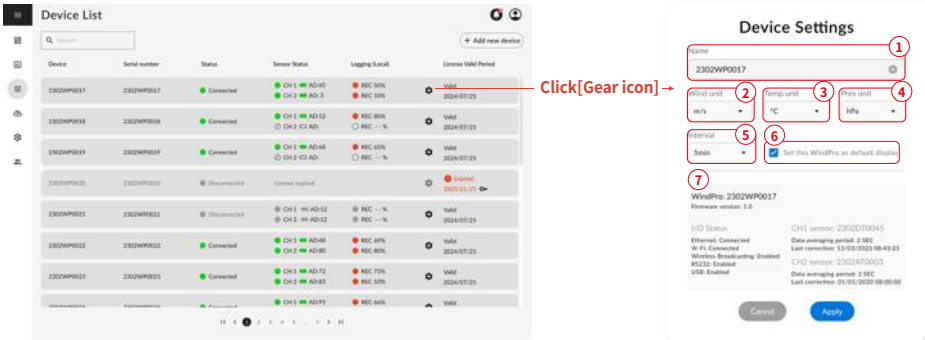


Key Description

- 1. Device search bar.** Enter keywords and filter specific devices.
- 2. Add new device button.** Click to add another WindPro console for your team.
- 3. Device name.** The assigned name can be changed in Device settings.
- 4. Device serial number.** The device's unique identification number.
- 5. Device connection status.** Show if the WindPro console is currently connected or disconnected from the portal.
- 6. Sensor connection status and details.** Includes sensor pairing address (AD), battery status of each channel's sensor.
- 7. Device internal logging status.** Show logging status and available internal memory for each channel.
- 8. License status and expiration date.** Show portal access status and when it will expire.
- 9. Device settings button.** View more details, adjust display settings. See [Device settings](#) for further details.
- 10. Add a license button.** Click to [apply another license](#) for the device to extend its accessibility.

Device settings (Display options)

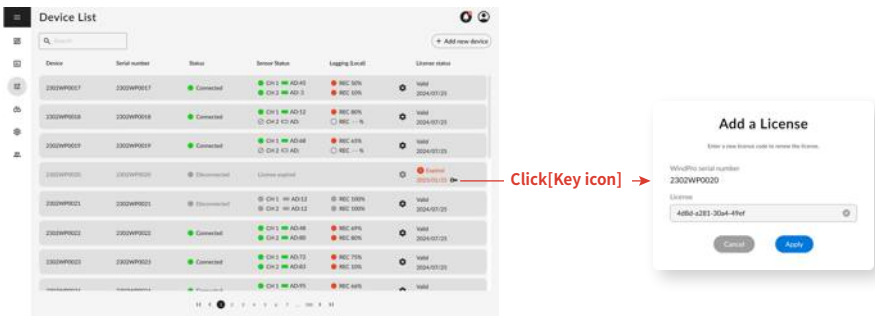
After clicking the Device settings button (gear icon), the Device settings dialog will be shown.



Key Description

- 1. Device name.** Assign a specific name to help easily identify the device.
- 2. Wind speed unit.** Select the display unit of wind speed: m/s, km/hr, MPH, knots, or ft/s.
- 3. Temperature unit.** Choose the display unit of air temperature: °C or °F.
- 4. Air pressure unit.** The display unit of air pressure (hPa).
- 5. Display interval of History record.** Select the interval for History data chart displaying: 5-min, 10-min, 15-min, or 60-min.
- 6. Default display device selector.** Check the box to set this device as default.
- 7. WindPro console information.** Includes device serial number, sensor serial number and additional details.

Add a License (Apply another license)



- Go to Device Management page and click the Add a license button (key icon) to apply for an additional license for the device to extend its accessibility.
- Enter new license code and click Apply. The validation date will be updated if the additional license is applied successfully.

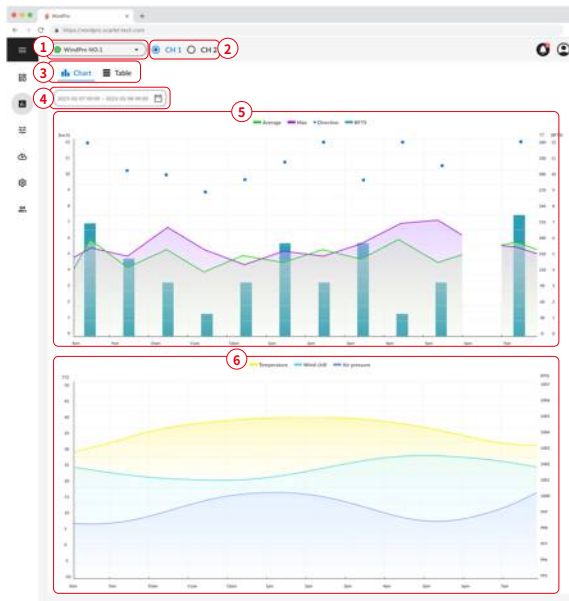
Acquire license code

The basic Scarlet WindPro Web Portal license provides a one-year validation period, allowing a specific WindPro console to upload its measurement data to the Scarlet WindPro Web Portal. Users belonging to the team that owns the WindPro devices can remotely access, view and download data through the Internet, and receive notifications by email or browser via WindPro Web Portal. Contact Scarlet Tech to obtain licenses.

Historical Data

The Chart & Table page displays past data uploaded from the WindPro console. Users can choose their preferred data, interval, and duration to view information in either chart or table format.

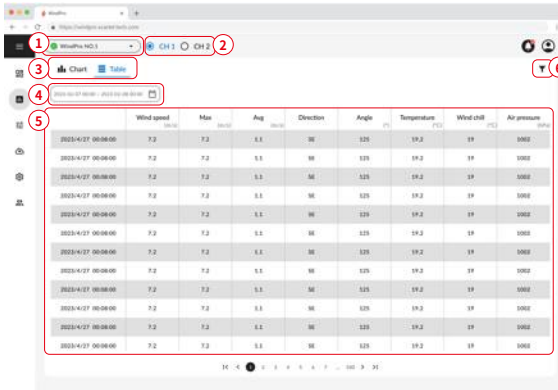
Chart



Key Description

- 1. Device selector.** Appears at the top of Liveview, Chart & Table, and Download pages to switch between devices.
- 2. Channel switch.** Click to view data for channel 1 or channel 2.
- 3. Chart & Table view switch.** Click to switch between chart and table display.
- 4. Date and time range selector.** Select an existing range (1 day, 3 days, 1 week, 1 month, 3 months, or 1 year), or custom date and time range to view data.
- 5. Charts show average wind speed, maximum wind speed, wind direction, Beaufort scale.**
- 6. Charts show air temperature, wind chill index, air pressure.**

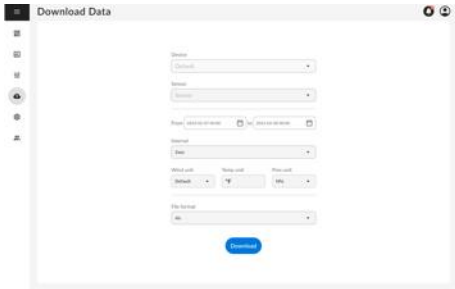
Table



1. Device selector. Appears at the top of Liveview, Chart & Table, and Download pages and can select to switch between devices.
2. Channel switch. Click to view data for channel 1 or channel 2.
3. Chart & Table view switch. Click to switch between chart and table display.
4. Date and time range selector. Select an existing data range (1 day, 3 days, 1 week, 1 month, 3 months, or 1 year), or custom date and time range.
5. Raw data shown in table format.
6. Data display filters.

■ Data Download

Scarlet Web Portal stores all the raw data uploaded from WindPro devices for online viewing and downloading. To export log data, simply go to Download page and select the preferred unit for measurements, interval, duration, and file format.

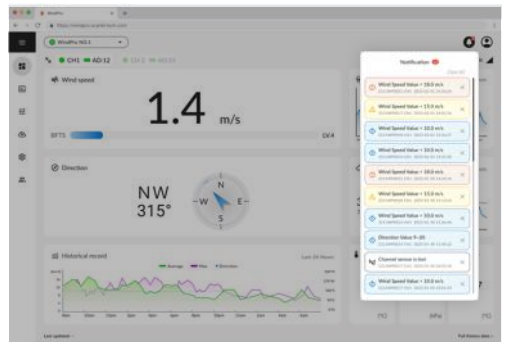


1. Go to Download page, select the device and sensor channel.
2. Specify the date range for data export.
3. Choose the averaging interval for data export: 2-sec, 1-min, 10-min, 1-hr, or 1-day. (raw data)
4. Select the desired units of wind speed, air temperature, and air pressure.
5. Select the output file format: text file (.csv), or Excel file (.xls, or .xlsx).
6. Click Download. A file destination popup will appear once the data are ready for downloading.

Remote Notification Management

The WindPro Web Portal offers users the flexibility to personalize their notifications through web browsers or email. Users can set up various types of notification for different events, including the severity of the notification and sound alert preferences.

- Browser Notification: When an event is triggered, a pop-up window will display on the screen, optionally accompanied by a sound alert.
- Email Notification: When an event is triggered, all selected recipients will receive an email containing the alert information.



Notification event trigger source

Notifications are configured for selected channels of connected WindPro devices. When setting up an event, users choose a WindPro device and sensor channel.

Notification event trigger condition

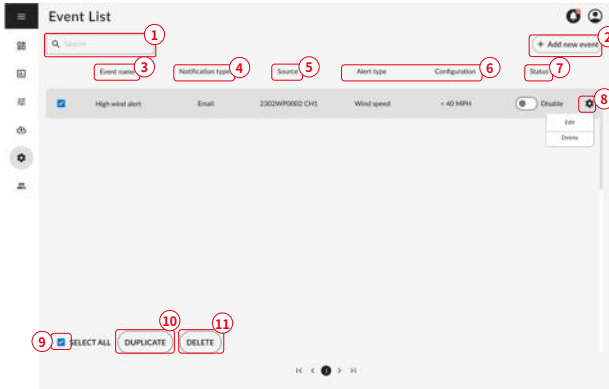
The trigger condition for an event can be determined by the following criteria:

- Wind speed exceeds a maximum threshold or falls below a minimum threshold.
- Wind direction is within a specified range.
- No data is received from a sensor (indicating the sensor is disconnected).

Alert types

- In-browser alerts: Pop-up messages appear on the screen with optional sound alarms to notify users about events like high wind speeds. Instead of immediately triggering an alert, users can configure a response delay time between 2 to 600 seconds.
- Email alerts: Emails are automatically sent by WindPro Web Portal when an event is first triggered. Users can set a snooze delay to prevent repeated emails for the same event within a selected time period.

Event management

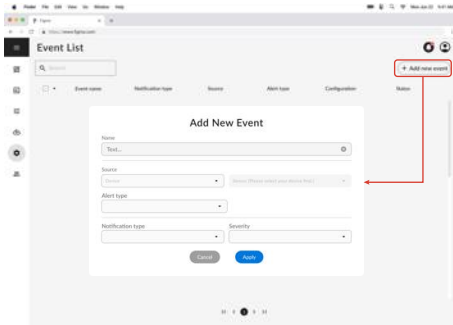


Key Description

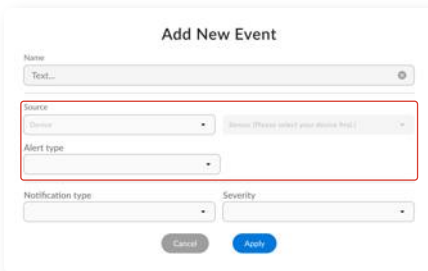
- 1. Event search bar.** Enter keywords and filter specific events.
- 2. Add new event button.** Click to create an event and define the notification.
- 3. Event name.** The assigned name can be changed in Event settings.
- 4. Notification type.** Show the event notification type: browser or email.
- 5. Notification event source.** Show the trigger source sensor channel of the notification.
- 6. Alert type & configuration.** Show the alert type and warning conditions of the notification event: wind speed, wind direction, or signal lost (sensor disconnection).
- 7. Event status.** Show whether the event is active or deactivated to trigger.
- 8. Event settings button.** View more details, adjust event settings, or delete the event. See [Edit event trigger settings](#) and [Delete an event](#).
- 9. Select all checkbox.** Checkbox for selecting all events on the current page at once.
- 10. Duplicate.** Provides an option to duplicate an event, copying its configuration to another one. See [Duplicate an event](#) for instructions.
- 11. Delete .** Delete selected events at once. See [Delete an event](#) about how to delete multiple events.

Add new event

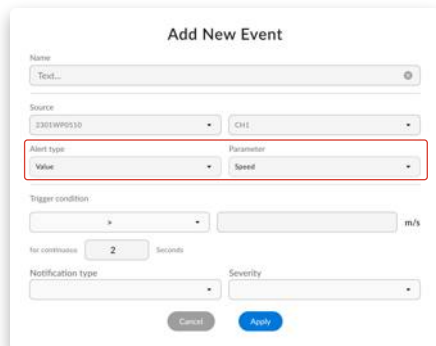
1. Navigate to the Notification page, then click Add New Event button. An event configuration dialog will appear.



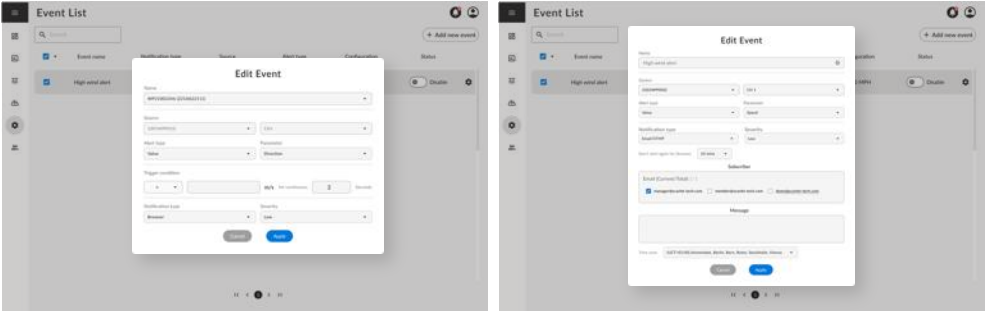
2. Determine the trigger source of the event by selecting the source device (WindPro) and sensor channel.



3. Determine the alert type:
 - For wind speed or wind direction, select VALUE, and then select the corresponding Parameter (SPEED or DIRECTION) to set the event trigger condition.
 - For sensor disconnection from the WindPro console, select SIGNAL LOST.



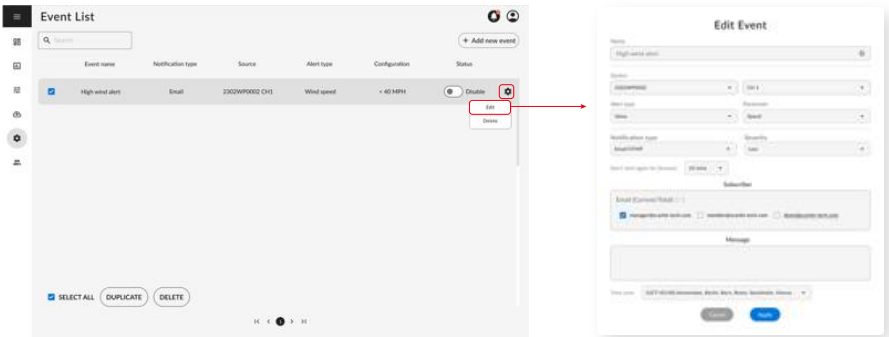
4. Determine the Notification Type and the Severity.
5. Configure the alert:
 - For email alerts, select EMAIL and choose recipients. Set a snooze delay to prevent repeated emails for the same trigger event within a chosen time period.
 - For web browser alerts, select BROWSER and choose a sound alarm option. Set a trigger delay to postpone the initial browser alert for a selected period after the trigger event occurs.



6. Click Apply to create the notification event.

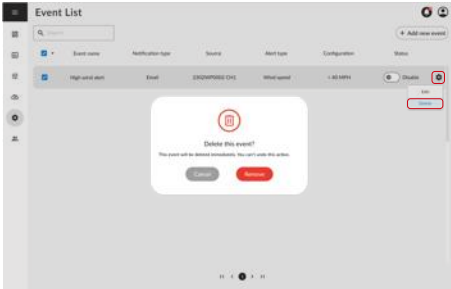
Edit event trigger settings

1. Click the Event settings button (gear icon) and select Edit. An Edit event dialog will appear.
2. Click Apply to save the modified settings.



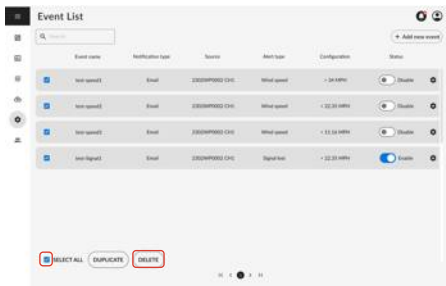
Delete an event

1. Click the Event settings button (gear icon) and select Remove. A deletion confirmation dialog will appear.
2. Click Delete to remove the event.



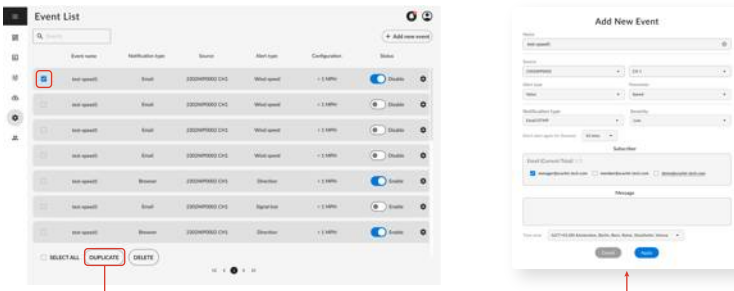
Delete multiple events

1. On the Event management page, check the boxes to select events to remove. By checking the "Select all" box, all events on the current page will be selected.
2. Click the Delete button to remove selected events.



Duplicate an event

1. On the Event management page, check the box to select an event to duplicate its event configuration.
2. Click the Duplicate button. An Add new event dialog will appear with all event configuration copied.
3. After adjusting the settings, click Apply to save the settings.

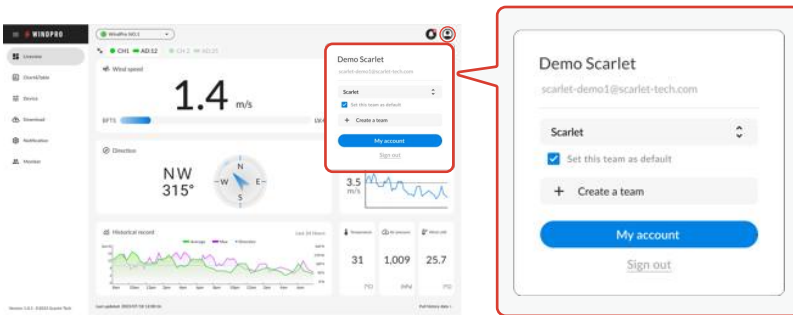


Profile (User Profile)

The User profile is displayed by clicking the Profile icon located in the top-right corner of the WindPro Web Portal. The User profile displays a user's name, account, and team-related information. After signing in, users initially see devices associated with the default team. They are able to switch between teams, set the default display team, or create a new team as needed via the User profile. Users can:

- **Switch team** by selecting a different team from the dropdown menu
- **Set the default display team** using the checkbox
- **Create a new team** using the Create a new team button
- **Manage account information**, which includes name and password

The User profile provides an easy way for users to manage their teams and view devices.



Edit Account information

You can change your account name and password as many times as you want on the User Profile.

1. Click the Profile icon; the User profile dropdown will appear.
2. Click the My account button. The My account dialog will appear.
3. On the My account dialog,
 - a. To change your account name, edit it in the Name column and click Apply.
 - b. To change your password, click Reset below the Password column and follow the on-screen steps.

Password reset

If you forgot or lost your password, follow the instructions to reset it:

1. Go to <https://windpro.scarlet-tech.com>.
2. Click Forgot password?
3. Enter your Scarlet WindPro Web Portal account email.
4. A WindPro Web Portal verification email will be sent to your account. Click the verification link to reset your password.



Team Settings

Manage your WindPro in Web Portal with your team

WindPro device is designed to be associated with a specific team. Managers within the team have the administrative privileges to control the team members' access of specific devices.

This ensures the information of the devices on the Web Portal remain private to the associated team's members only. User has the flexibility to join multiple teams to access the data of multiple devices for collaboration.

Team Roles

When you create a WindPro Web Portal account, your initial role is the Team Manager of your own team which provides full access to all services. A single account allows you to create and join multiple teams, each with specific team roles and permission levels.

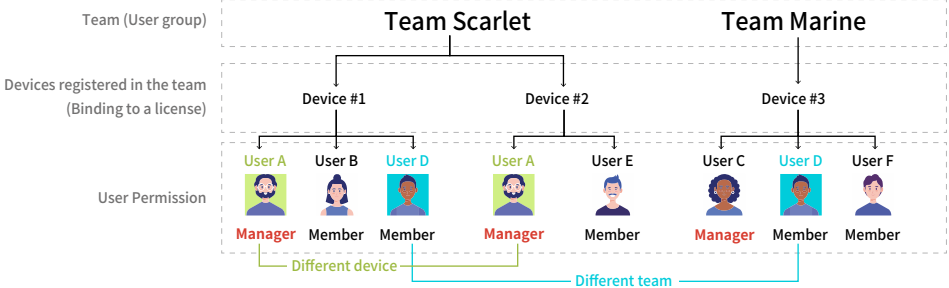
- Manager: Team managers oversee team settings. They can add and remove members, change the team name, assign device access permissions to members, etc. There can be multiple managers in a team.
- Member: Team members can view and download data from devices they have access to. They can also be designated as notification recipients.

The following table shows the functionalities for each role:

Functionality	Manager	Member
Lieview	v	v
Chart & Table	v	v
Device	v	v
Download	v	v
Notification	v	
Member	v	

The different team roles enable monitoring, sharing and notification of data within a team through the WindPro Web Portal platform.

Here is an example of WindPro Web Portal structure.



Team Scarlet:

- Owns two WindPro devices (Device #1, Device #2)
- Includes 4 users: User A (Team Manager), user B, user D, user E
- User A (Team Manager) controls which users can access specific devices. To assign device permissions, see [Assign Device Permissions](#).

Team Marine:

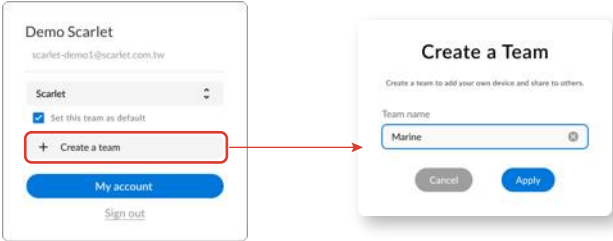
- Owns one WindPro device (Device #3)
- Includes 3 users: User C (Team Manager), user D, user E
- User C is the Team Manager.

User D belongs to both Team Scarlet and Team Marine. Therefore, user D can switch different team views by selecting the team within the user profile. To switch teams, see [Switch Team View](#).

Create a new team

You can change your account name and password as many times as you want on the User Profile.

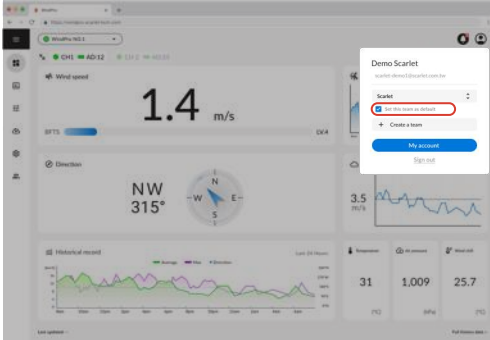
1. Click on Profile icon; the User profile dropdown will appear.
2. Click Create a team.
3. Enter the team’s name and click Apply. The new team will be added to your account, and you will be the Manager of the team.



Set the default display team

You can choose a default team for the portal.

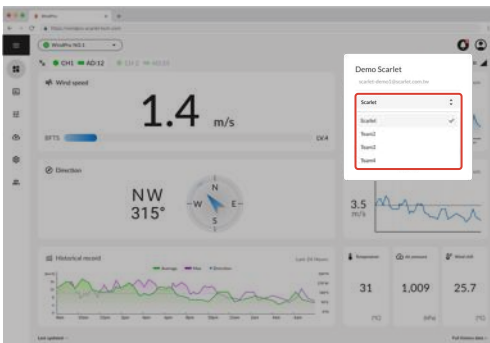
1. Click the Profile icon; the User profile dropdown will appear.
2. Check the Set this team as default checkbox. This setting will be applied upon your next sign-in.



Switch team

To see devices associated with another team the user belongs to:

1. Click the Profile icon; the User profile dropdown will appear.
2. Select the team name from the dropdown menu.
3. The WindPro Web Portal will now show the view of the team selected.



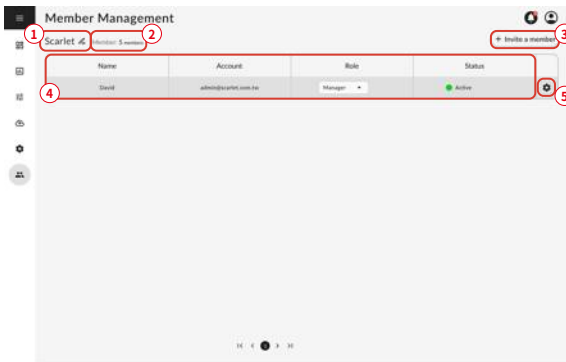
■ Member management

On the Member Management page, Team manager can view a list of the team manager and members along with their role in the team and account status, Team Manager can also invite or remove the member from the team.

To view the list of members

1. Sign in to the WindPro Web Portal.
2. At the WindPro Portal menu, click “Member” for entering the team and member management page.

**Only Team Manager has access to the Member page*



Key Description

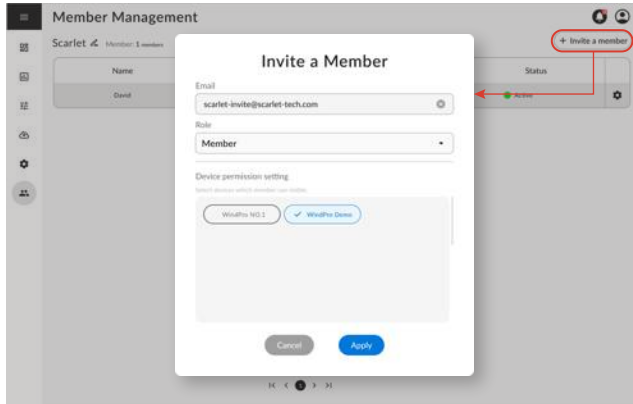
1. **Team name.** Click the edit icon to change the name of this team.
2. **Member quantity.** Show the number of users in this team.
3. **Add a new member.** See [how to invite a new team member](#).
4. **Member list.** View information about all members, roles, account status. See [Team Roles](#).
5. **Entry of Device permissions settings and member removal.** See [assign device permissions](#) and [remove a member](#).

Invite a new team members

1. Go to the Member page.
2. Click on Invite a Member. An invitation form will appear.
3. Enter the email address of the person you wish to invite, select the appropriate role, and select devices you wish to grant the permission.
4. Click Apply to initiate the invitation process. The WindPro Web Portal will send an invitation email to the email address you entered, containing a registration link.
5. The recipient of the invitation email needs to click on the invitation link and complete the Portal registration process by following the instructions provided.

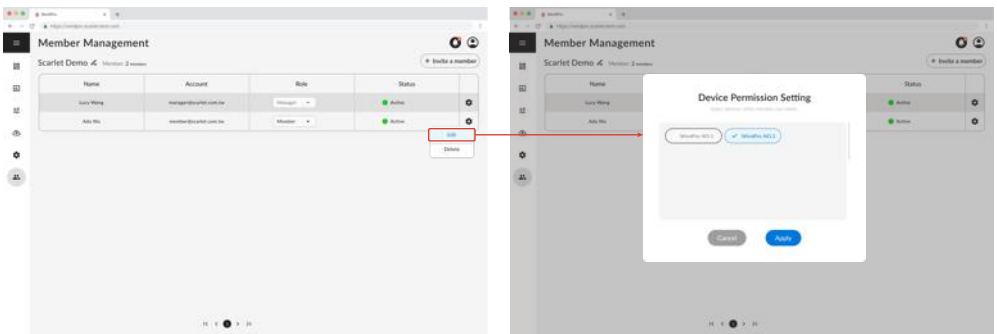
By completing the registration process, the new member to your team can view the device information in the WindPro Web Portal.

**The role and accessible devices can be modified later at the Member management page.*



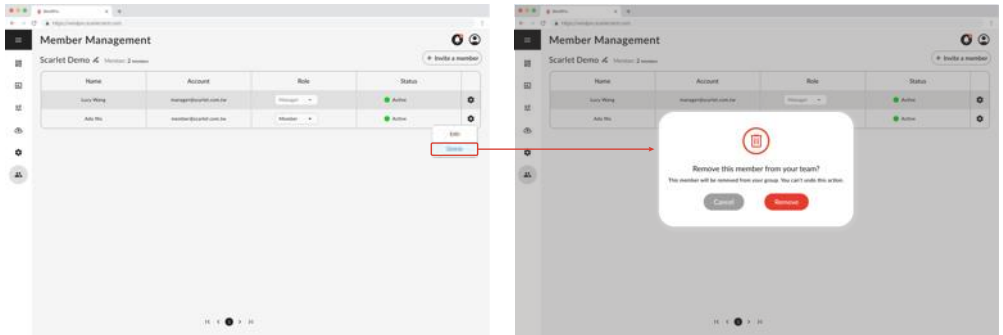
Assign device permissions

1. Go to the Member page.
2. Locate the row for the member you want to modify device access, and click the gear icon at the right side.
3. From the options that appear, click on Edit
4. Select devices you wish to grant the permission for the member to access, and click Apply to save the change.



Remove a member

1. Go to the Member page.
2. Locate the row for the member you wish to remove. Click the gear icon at the right side.
3. From the options that appear, click on Delete
4. A dialog box will appear confirming the removal action. Click Remove to proceed with removing the member from the team.





Scarlet Tech Co., Ltd.
© 2023 Scarlet Tech Co., Ltd. All rights reserved.
4F.-3, No. 347, Sec. 2, Heping E. Rd., Da'an Dist., Taipei City 100, Taiwan
info@scarlet.com.tw
www.scarlet-tech.com

version 230804.0