

2023 ALL NEW

The Ultimate Long-Range Wind Alarm and Industrial Control System



SCARLET | TECH

WindPro



Distributed by:
Air-Met Scientific Pty Ltd
Air-Met Sales/Service
P: 1800 000 744
F: 1800 000 774
E: sales@airmet.com.au

Air-Met Rental
P: 1300 137 067
E: hire@airmet.com.au
W: www.airmet.com.au

 Max 1,000M
Wireless Range

 Data Recording
in Excel

 4 Levels Custom
Wind Alarm

 Various IIOT
Integration Options

WindPro Wireless Anemometer



Max 1,000 Meters
Sub-1GHz Wireless Technology



Wireless Wind Sensor

- Wind Speed (Live/Avg/Max)
- Wind Direction
- Air Temperature
- Air Pressure


WindPro Control Console

- Custom wind alerts (4 levels)
- Data recording
- IIoT integration outputs
- 2 sensors support
- Large anti-glare touch console


Alert & Devices Integration

WindPro equipped with various industrial outputs. Users have the ability to configure up to 4 thresholds for each wind sensor, activate the embedded flashlight and audible alarm, control equipments, and display live and reliable readouts of critical industrial metrics.


- **Alarm Types:** Wind speed/ Wind direction/ Connection
- **Thresholds:** 4 for each sensor
- **Devices control:** Single relay /Multiple relays
- **Configurable:** Alarm duration/ Response time/ Threshold invert




Relay Switches
Activate connected devices with set thresholds



4-20mA Outputs
Integrate industrial automation controls & data acquisition



RS232 Utility
Direct connection to PC & signboard for live monitoring



Bluetooth App
iOS/Android App for multi-devices live data access & instant alert

Connect Two Different Sensors in One Console

WindPro Console can connect with 2 different wireless sensors at the same time for live monitoring, data recording, alert, and devices integration.

Capable sensor types:

- **WL-21** Wind Speed & Wind Direction Sensor
- **WR-3 Plus** Wind Speed Sensor



Data Recording

With 128MB built-in memory. WindPro capture and record wind speed, wind direction, temperature, air pressure measurements. History logs can be export to Excel or CSV files via ScarletWind software for detailed analysis.

- **Memory:** 128MB
- **Data Format:** Excel, CSV
- **Recorded Data:** Timestamp, wind speed, wind direction, air temperature, air pressure.

Applications



Cranes & Construction



Ports, Terminals & Marine



Entertainment



Renewable Energy

Technical Specifications

Wireless Wind Speed & Direction Sensor



Wind Speed Sensor

- **Range:** 0.3...50 m/s±2°
- **Accuracy:** ±2% full scale
- **Unit:** m/s, knots, MPH, km/hr, ft/s

Atmospheric Pressure

- **Range:** 500...1100 hPa
- **Accuracy:** ±0.4 hPa
- **Unit:** hPa, Atm, mmHg, bar, Pa, inHg

Ambient Temperature Sensor

- **Range:** -30°C ... 60°C
- **Accuracy:** ±1°C
- **Unit:** °C, °F

Wind Direction Sensor

- **Range:** 0-359° no blank sector
- **Accuracy:** ±2°
- **Resolution :** 1°

WindPro Control Console

Data Collection
Wind speed (Live/Avg/Max), Wind direction, Ambient temperature, Wind chill, Beaufort scale, Air pressure

Alarm

- **Sound Alarm:** > 110dB
- **Alert Thresholds:** Wind speed x3, Wind direction x1 (per channel)

Outputs
Relays, 4-20mA, RS232, USB type C, RJ45

Data Recording

- **Memory:** 128MB
- **Interval:** Every 2 seconds
- **Parameter:** Wind speed, wind direction, air temperature, air pressure
- **Format:** Excel

Software Support

- **Mobile App:** WindSmart Bluetooth APP
- **PC Utility:** WindPro RS232 Utility
ScarletWind Data Extraction Software



Wireless Range	Max 1,000 meters (Sub-1 GHz)
Data Rate	Every 2 seconds
Installation	Magnetic sensor bracket & display holder
Power Supply	Sensor: 3.6V 18505 Lithium battery x1 (up to 3 years) Console: AC 100-240V (Power adaptor)
Dimension	Sensor: 262.5 x 183.5 x 32mm Console: 185 x 126 x 65mm
Weight	Sensor: 406g Console: 700g

Package Content

- WL-21 Wireless Sensor (Wind Speed & Wind Direction)
- 3.6V 18505 Lithium Battery x1 (placed in Sensor)
- Magnetic Sensor Mounting Bracket x1
- WindPro Control Console x1
- Receiver Antennas x 2
- Power Adapter (100-240V, 50/60Hz, 1.5A)
- Receiver Holder Kit x1
- User Manual & Certificate of Conformity

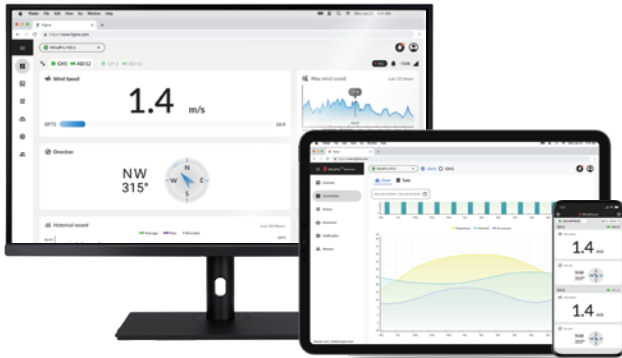


Optional Accessories

- Scarlet Web Portal Access
- WR-3 Plus Wireless Sensor (Wind Speed)
- WL-21 Wireless Sensor (Wind Speed & Wind Direction)
- WindPro Control Console
- WR-3 Plus Wireless Receiver
- WL-21 Wireless Receiver
- LED Stack Light With Siren
- Spare Wind Cups
- Spare Sensor Battery

Scarlet Web Portal (OPTIONAL)

Upgrade to WindPro Online for advanced remote monitoring. Get real-time email and web alerts, unlimited cloud-based data storage, and monitor mission-critical data from multiple WindPro devices on-the-go.



- ✓ Worldwide Remote Monitoring
- ✓ Remote Notification via Browser / Email
- ✓ Highly Configurable Alerts Settings
- ✓ Unlimited Data Recording
- ✓ Historical Report & Visual graph
- ✓ Multiple Devices Data Access

Model	WindPro	WindPro Online
Monitoring Range	Maximum 1,000 Meter	Maximum 1,000 Meter Unlimited Remote Web Access
Data Recording	128 MB	128 MB Unlimited Cloud Storage
Custom Wind Alarm	Sound Alert Devices Control	Sound Alert Devices Control Custom Email Web Alert
Multi-Devices Monitoring	2 Sensors	Unlimited Device Registration



Scarlet Tech Co., Ltd.
© 2023 Scarlet Tech Co., Ltd. All rights reserved.
4F-3, No. 347, HePing E Rd, 2nd Sec, DaAn District, Taipei City 106, Taiwan
info@scarlet.com.tw
www.scarlet-tech.com

version 230228