

**FOTRIC 226<sub>B</sub>**

# Group Temperature Screening

For high traffic

**AGILE | ACCURATE | RELIABLE**

Advanced A.I. Facial Detection Monitoring system



Air-Met Scientific Pty Ltd

Air-Met Sales/Service

P: 1800 000 744

F: 1800 000 774

E: sales@airmet.com.au

Air-Met Rental

P: 1300 137 067

E: hire@airmet.com.au

W: www.airmet.com.au

# AGILE



## Group Screening

- Built-in AI facial detection module can screen entire groups of people simultaneously.
- Automatically detects and locks frame and dynamic temperature tag onto face. Even with elements such as masks and glasses.



Multi-target

20+

People



Mask & Glasses

## Non-stop Walking

- Face-Tracking allows accurate detection on-the-go.
- Smooth screening with normal flow of people at high-traffic facilities.



Rush Hour

30

Frames per second



## Plug and Play

- Professional thermography that needs no training.
- Friendly installation and operation.

15min

Set-up



Plug

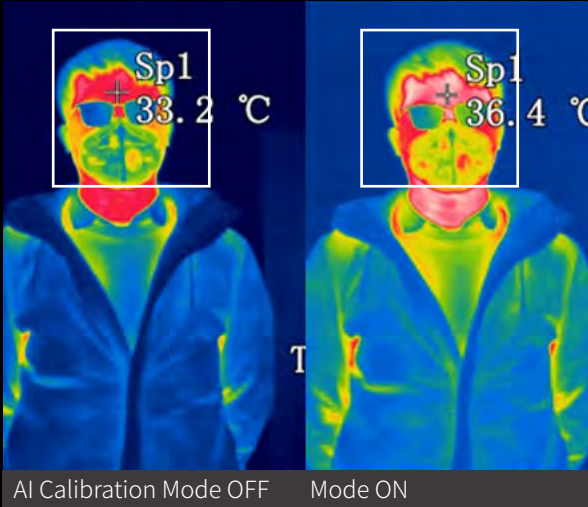


Adjust



Complete

# Accurate



## Self-Calibration

- Automatically collects body temperatures in different scenarios for self-learning.
- Adjusts the compensation temperature in real time by to refine ambient-biased readings.
- Self-calibration ensures **24/7** stable accuracy without Blackbody.



24/7  
Accuracy

## Millimetrical Precision

- AI dynamic Face detection will report the hottest spot on the facial surface, wherever it is.
- Its High-resolution thermal sensor scans simultaneously thousands of spots on the face with millimetrical precision (sensitivity NETD).

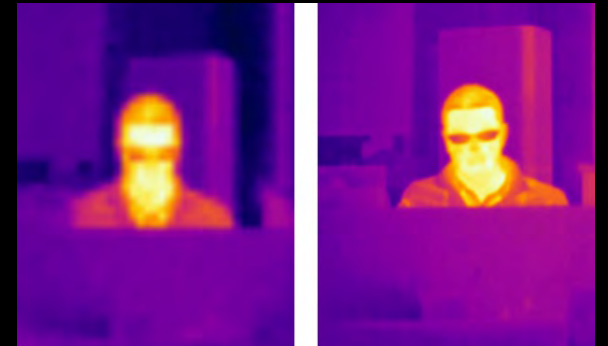


$\pm 0.5^{\circ}\text{C}$   
Accuracy



## False Alarm-proof

- Intelligently blocks non-facial high temperature sources that would mistakenly trigger the alarm.



# Reliable



## Multiple Alarm

- Green face frames turn Red when high body temperature is detected.
- Voice or Ring alarm.
- Automatic snapshot of people with abnormal temperature.



Normal



High Temp



Alarm



Snapshot



## Smart Archive

- Separate snapshots archive for normal and abnormal readings.
- Multiple shooting modes for enhanced disk space management.
- File naming with detailed measurement information for easy tracking.



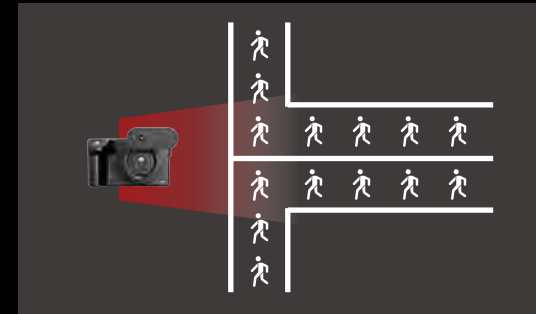
Date



Time



Temp



## Social Distancing

- Contactless long-distance screening.
- Broad effective measuring area keeps both users and screening staff safe.



2.5—10.5 ft



4—6 ft

# Scenes



**Hospital**



**School**



**Office**



**Public Transportation**



**Business Center**



**Tourism**

# Specification

|                               |  |
|-------------------------------|--|
| Model                         | Fotric 226B  |
| IR Resolution                 | 384x288 pixels   |
| Thermal Sensitivity(NETD)     | <0.05°C@30°C   |
| Field of View(FOV)            | 28°Hx21°V  |
| Detector Type                 | Polysilicon-FPA,uncooled microbolometer,17μm,Spectral Range 8-14μm |
| Frame Rate                    | 30Hz   |
| Temperature Range             | 20°C-60°C(68°F-140°F)  |
| Temperature Stability         | ±0.5°C(±0.2°C with blackbody)                                      |
| AI Face Detection             | Dual Light Detection(visible light and infrared thermal)           |
| AI Body Temperature Algorithm | Real time compensation temperature calibration                     |
| Statistic Function            | Automatic statistics of test number                                |
| Shooting Mode                 | Automatic abnormal temperature snap shot or manual shooting        |
| Alarm Function                | Dual color alarm and sound alarm                                   |
| Color Pallet                  | Black-White/Iron/Rainbow   |
| Image Format                  | Standard JPEG with temperature data                                |
| Interface Connection          | USB  |
| Software                      | WLIR Face AI Infrared Thermal Software                             |
| Operating Temperature         | 0°C-40°C(32°F-104°F)   |
| Storage Temperature           | -20°C-50°C(-4°F-122°F)   |
| Enclosure Rating              | IP40   |
| Charging System               | DC 12V Charger   |
| Weight                        | ±560g  |
| Dimensions(LxHxW)             | 97mmx145mmx93.5mm  |
| Tripod Mounting               | UNC 1/4"-20  |
| Warranty                      | 1 year   |
| Battery Life                  | 10 hours   |

## Certification





Equipment described herein may require EU, US and UNSC authorization for export purposes.

Imagery for illustration purposes only.

Specifications are subject to change without notice.

FOTRIC INC. All Rights reserved.

Innovation  
Excellence  
Integrity