

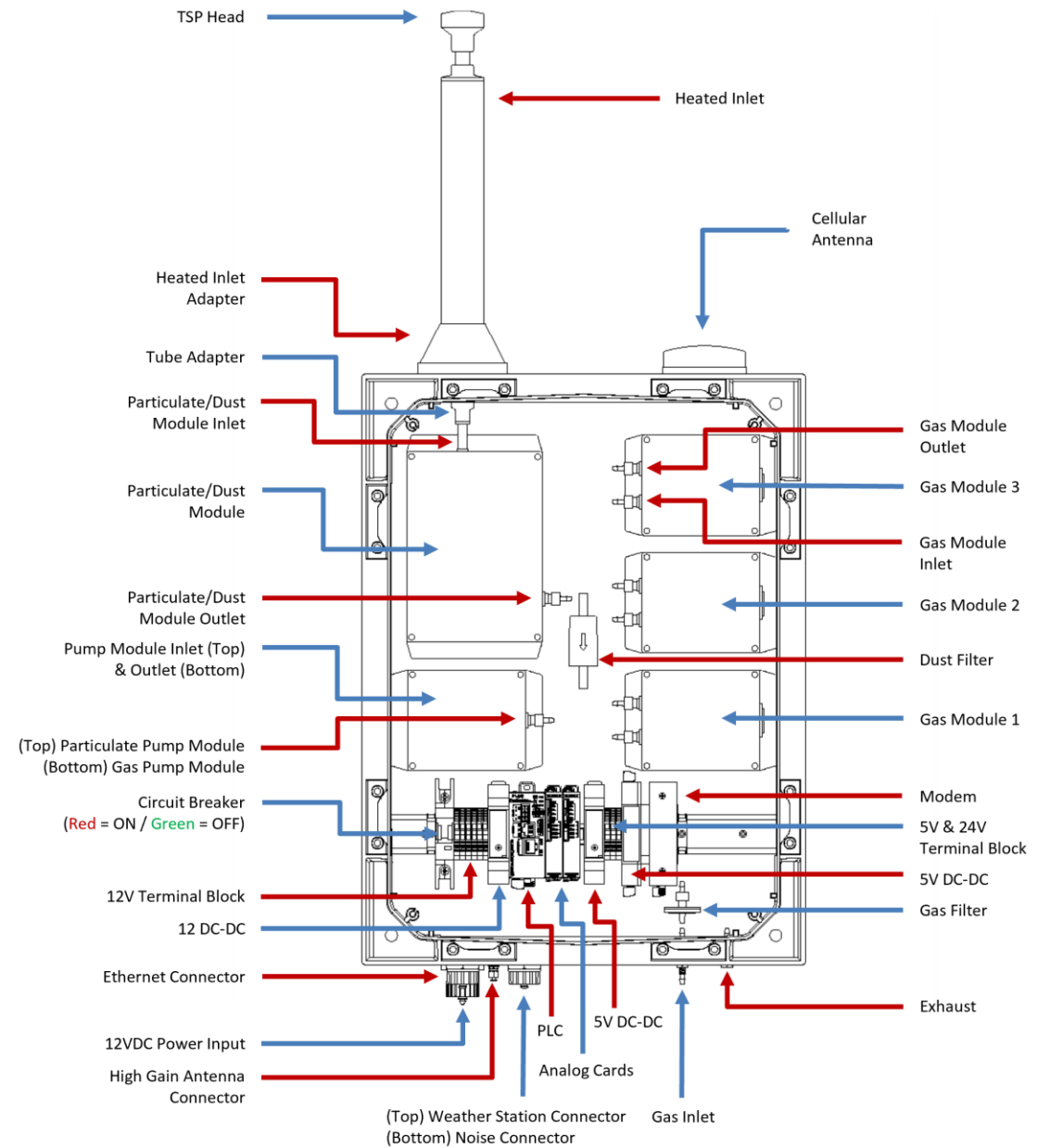
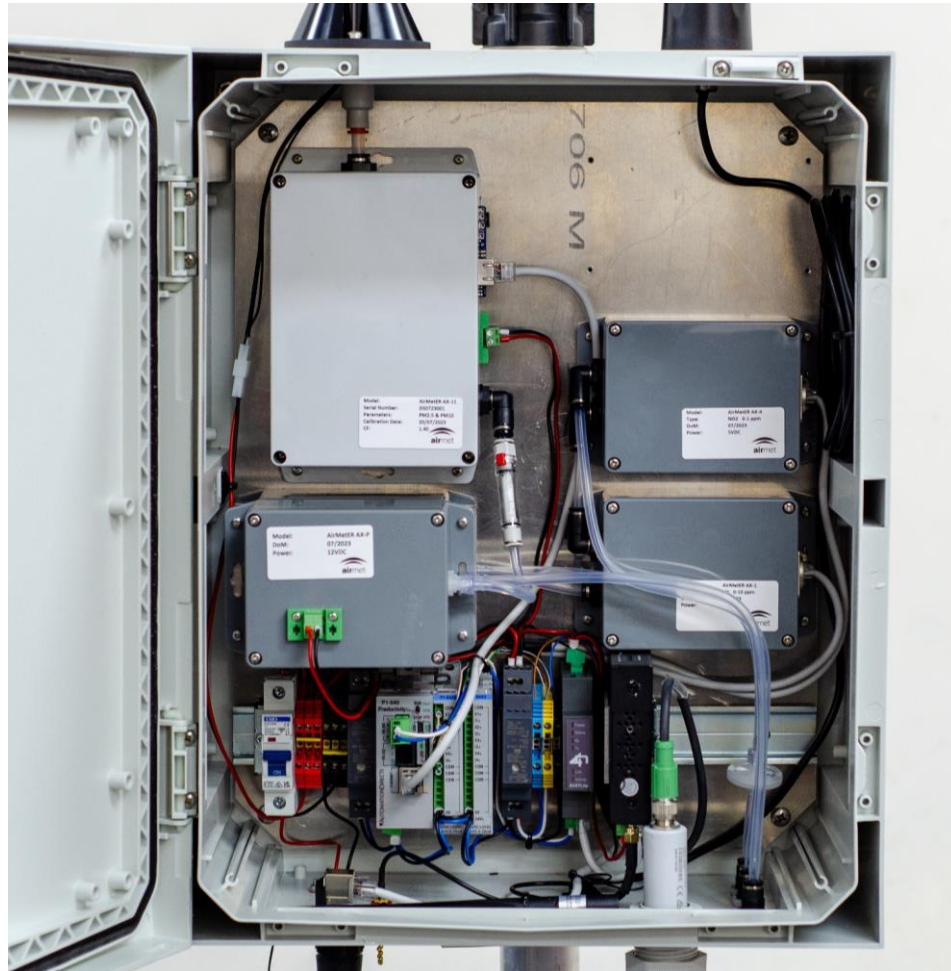
# AirMetER-AX

## PARTICULATE SENSOR MODULE REMOVAL & REPLACEMENT GUIDE

Revision | August 2023



# LAYOUT OVERVIEW



Note: Images may differ depending on the model.

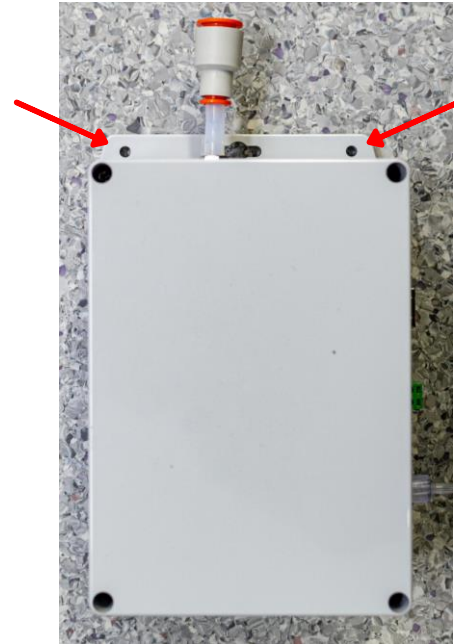
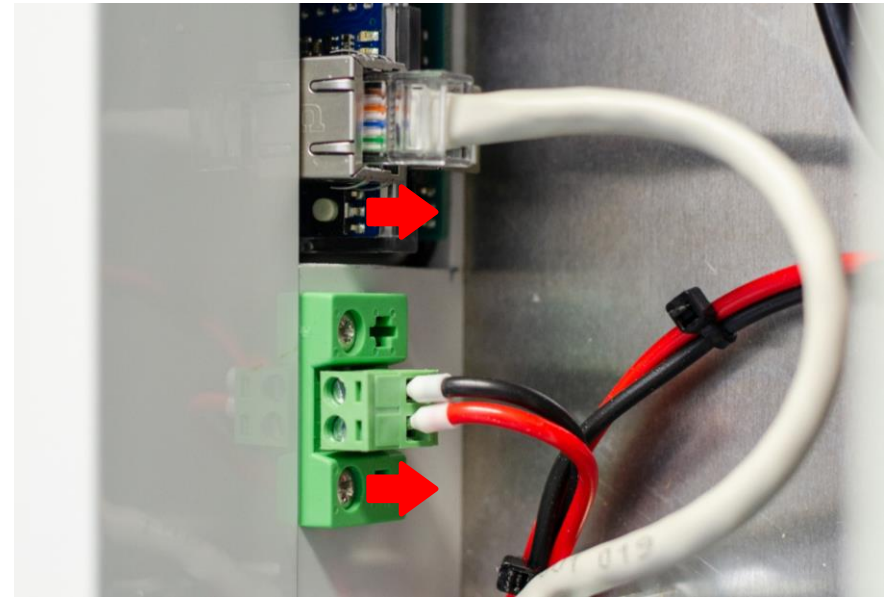
# PARTICULATE SENSOR MODULE REMOVAL & REPLACEMENT

- When the particulate sensor module is due for calibration, the module can simply be swapped with a spare calibrated module, allowing for continuous data monitoring.
- If there is no spare module, the installed module can be removed and sent to your local Air-Met Scientific location for calibration.



# PARTICULATE SENSOR MODULE REMOVAL & REPLACEMENT

1. Disconnect the power connector, ethernet cable and dust output line.
2. Unscrew the 4 screws that are holding the particulate sensor module.
3. Slowly slide the module down to disconnect from the inlet.



## WARNING:

- Do not use a power drill on the particulate sensor module screws as this may cause damage to the instrument.
- Ensure that the AirMetER-AX is switched off and disconnected from any power source while removing and replacing the particulate sensor module.

# PARTICULATE SENSOR MODULE REMOVAL & REPLACEMENT

4. To reinstall the particulate sensor module, repeat the steps taken in reverse order to remove the module.
5. Once the module has been positioned, make sure all connections are properly coupled.
6. The new module will communicate with the PLC and apply a new correction factor.
7. Confirm that the instrument is uploading data either through LiveSense or whichever platform the instrument is connected.



# CONTACT US

## NEED HELP?

If you have any questions or require troubleshooting while using this guide, our team are here to assist you. Please feel free to contact us at any of the following means:

 1800 000 744

 [engineeredolutions@airmet.com.au](mailto:engineeredolutions@airmet.com.au)

 [www.airmet.com.au](http://www.airmet.com.au)

Alternatively, scan the QR code to locate your nearest Air-Met Scientific office.

