

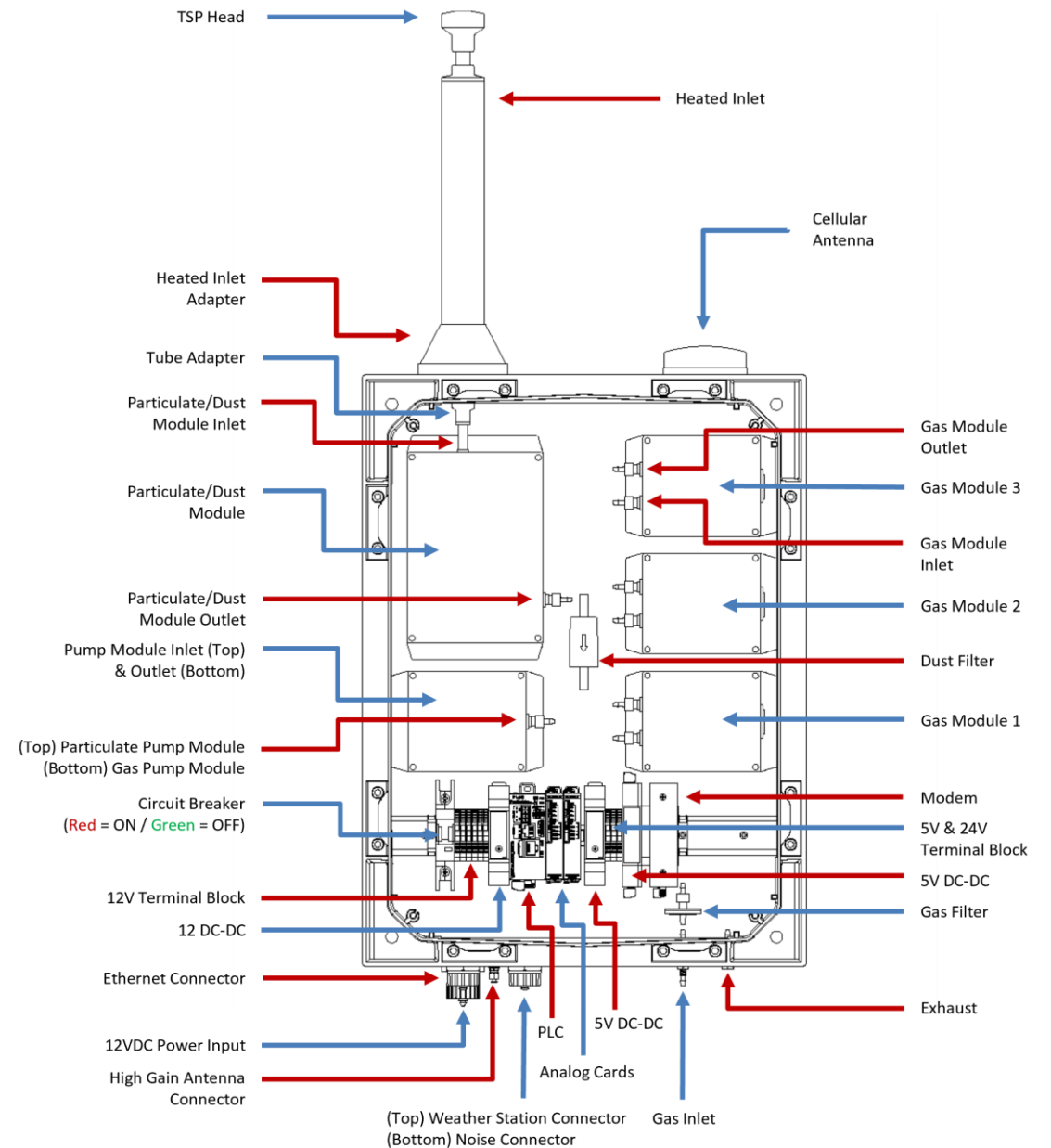
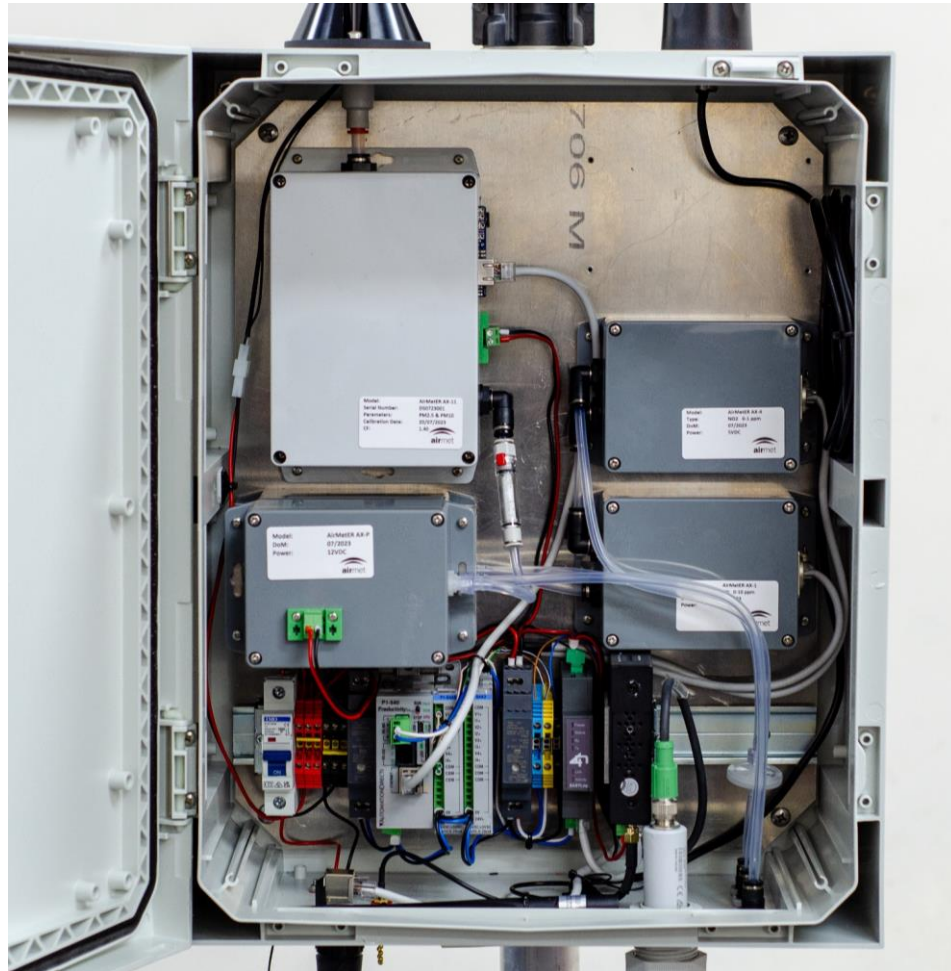
AirMetER-AX

MAESTRO/LANTRONIX ETHERNET SETUP GUIDE

Revision | August 2023



LAYOUT OVERVIEW



Note: Images may differ depending on the model.

ETHERNET SETUP

1. The AirMetER-AX has a LAN cable port available. Simply connect the ethernet cable which will enable data transfer.



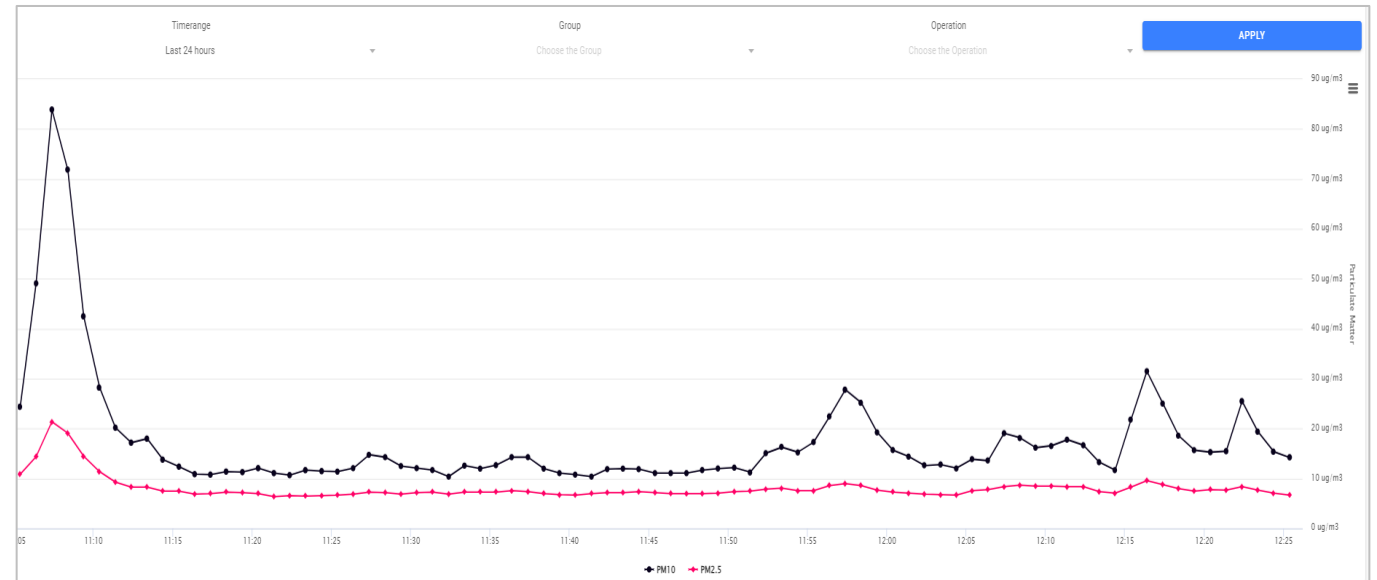
ETHERNET SETUP

2. Check that the ethernet cable labelled WAN/LAN is connected to the ethernet adapter from the WAN/LAN port of the modem.



ETHERNET SETUP

5. Once the ethernet has been connected and an internet connection has been established, the modem can send data to the cloud.



CONTACT US

NEED HELP?

If you have any questions or require troubleshooting while using this guide, our team are here to assist you. Please feel free to contact us at any of the following means:

 1800 000 744

 engineeredolutions@airmet.com.au

 www.airmet.com.au

Alternatively, scan the QR code to locate your nearest Air-Met Scientific office.

