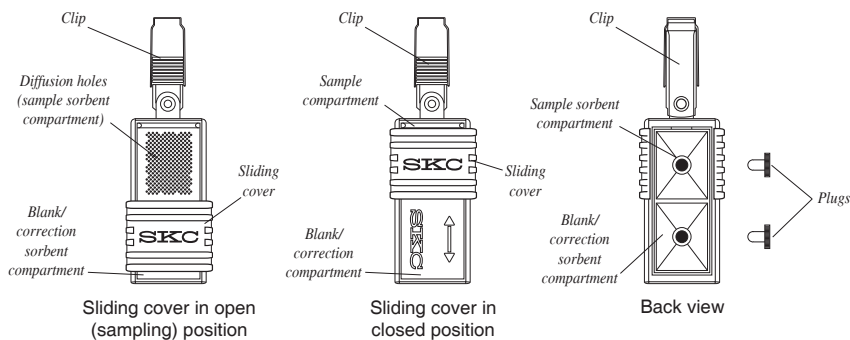




Operating Instructions

863 Valley View Road, Eighty Four, PA 15330
724-941-9701 • skcinc.com

ULTRA Passive Samplers with Anasorb CSC Sorbent Cat. No. 690-105



Applications

SKC patented* ULTRA Passive Samplers provide for low ppb to ppt detection of organic vapors in ambient and indoor air.

Performance Profile

Sampling Rates: Go to the SKC Passive Sampling Guide at www.skcinc.com.

Analysis: Solvent extraction; gas chromatography
See Analysis Instructions at www.skcinc.com/knowledgecenter.

Shelf-life: Six months from date of manufacture. Store at ≤ 39.2 F (4 C).

* U.S. Patent No. 6,607,581



Distributed by:
Air-Met Scientific Pty Ltd

Air-Met Sales/Service
P: 1800 000 744
F: 1800 000 774

E: sales@airmet.com.au

Air-Met Rental

P: 1300 137 067

E: hire@airmet.com.au

W: www.airmet.com.au

Sampling

1. Open pouch. Remove sampler.
 - a. Do not discard pouch.
 - b. Store pouch in a clean, organic solvent-free environment.
2. Record the following:
 - a. **Sample ID** on pouch and sampler ID label
 - b. **Sampling location** on pouch
 - c. **Date sample taken** on pouch

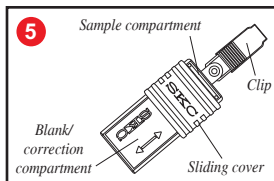
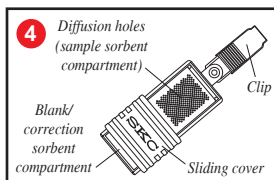
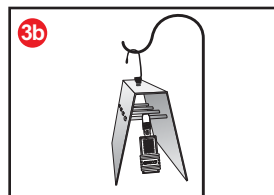
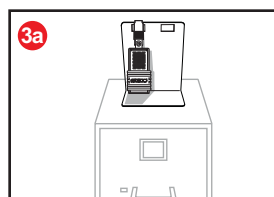
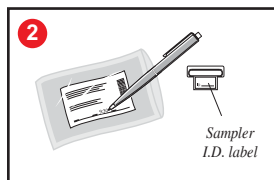
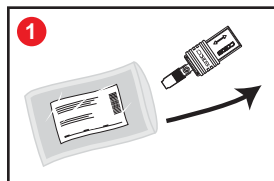
! *Do not use Sharpie® markers or equivalent to mark label or pouch as these can off-gas VOCs.*

3. Clip sampler(s) in appropriate location.
 - a. **Indoors:** Clip sampler(s) to stand accessory (Cat. No. 690-302) and locate at appropriate height.
 - b. **Outdoors:** Clip sampler(s) inside shelter (open on two ends and bottom to allow air to flow freely). Hang shelter securely at the appropriate height.

! *Ensure diffusion holes in sampler are not obstructed in any way.*

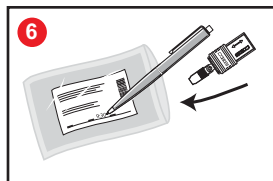
4. Start sampling: Slide sampler cover to open position (diffusion holes visible). Write sample start time on pouch label.

5. Stop sampling: Slide sampler cover to closed position (arrow and SKC visible). Write sample stop time on pouch label.
Important: Measure and record ambient temperature and atmospheric pressure. Include in information sent to the laboratory.

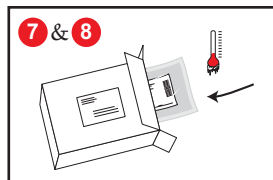


6. Place sampler in its resealable pouch **immediately** after sampling.

❗ **Ensure sample ID on sampler matches sample ID on pouch.**



7. Seal pouch(es). Place pouch(es) in container with cool pack.
8. Use expedited shipping to send sample(s), pertinent information, and Chain of Custody form(s) to a laboratory for analysis.



Storage

Before Sampling: Up to 6 months at ≤ 39.2 F (4 C) in a clean, organic solvent-free environment

After Sampling: 21 days at ≤ 39.2 F (4 C) in a clean, organic solvent-free environment

Ordering

ULTRA Passive Samplers, pk/5, prefilled with:	Cat. No.
Anasorb® CSC, 500 mg in each compartment <i>Limited shelf-life; see Storage above</i>	690-105

Sampling Accessories

Stand for Indoor Sampling	690-302
Shelter for Outdoor Sampling	690-303

SKC Limited Warranty and Return Policy

SKC products are subject to the SKC Limited Warranty and Return Policy, which provides SKC's sole liability and the buyer's exclusive remedy. To view the complete SKC Limited Warranty and Return Policy, go to skcinc.com/warranty.

