

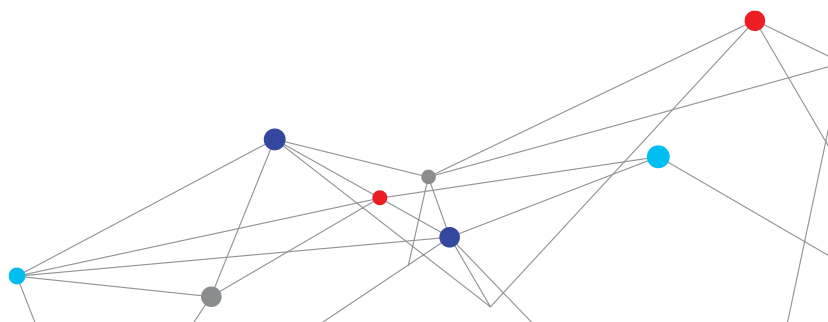
# SOUND EXAMINER SOUND LEVEL METERS SE-400 SERIES

The TSI Quest™ Sound Examiner Sound Level Meters SE-400 are engineered to accurately measure noise levels in highly variable environments, including those that require intrinsic safety. These meters compute average sound pressure level ( $L_{EQ}/L_{AVG}$ ) over the run time, helping you to more accurately assess occupational and environmental noise levels. All models are ready to use with no set-up required.

## Features and Benefits

- + Red models have Intrinsic Safety approvals
- + Intuitive interface allows for out-of-box use with little to no training
- + User selectable data logging intervals for download and analysis with TSI Quest Detection Management Software (sold separately)
- + Averaging functionality allows for easy measurement in variable environments
- + Printing capability with optional digital printer\* provides hard copy documentation in the field
- + Choose from models with Class/Type 1 or Class/Type 2 microphones, dependent on your application
- + SE-401 and SE-402-R models include removable preamp
- + Meets applicable industry standards
- + Useful tool as part of a Hearing Conservation Program; be confident that data collected is accurate

\* Not available on Intrinsically Safe models.



# ACCURATE AND INTUITIVE ANALYSIS MODELS FOR MANY APPLICATIONS



## **Choice of Microphones**

- + User can specify microphone type (Class/Type I or Class/Type II) based on application.
- + Select Type II for general duty; Type I accuracy for legal metrology.

## **Removable preamp\***

- + Preamp can be easily removed to enable interference-free low-level monitoring, especially for remote use.

## **Aerodynamic shape**

- + Minimizes disturbance to sound fields being measured, assuring accurate readings.

## **Onboard data logging**

- + Allows user to capture maximum, minimum and peak values for thorough analysis.
- + Can be used with TSI Quest Detection Management Software DMS to manage compliance with hearing conservation programs.

## **Conformance to standards**

- + Meets IEC 61672-1 (2002) and ANSI S1.43-1997 (R2007) standards and is CE certified.
- + Intrinsic Safety approvals on SE-401-IS and SE-402-IS.



## **SOUNDPATROL PORTABLE DIGITAL PRINTING (OPTIONAL)\***

- + Enables hard-copy documentation of measurement results in the field.
- + Facilitates noise ordinance enforcement and on-the-spot citation issuance.

\* Does not apply to Intrinsically Safe models.

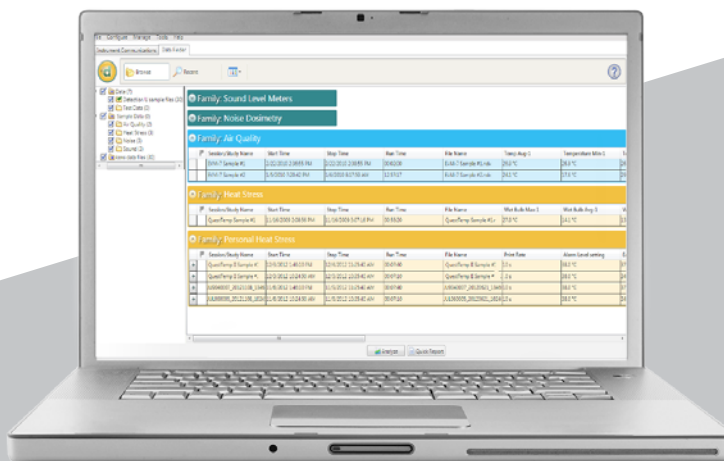
# CHOOSE THE MODEL THAT BEST MEETS YOUR NEEDS

	Sound Examiner SE-401	Sound Examiner SE-402	Sound Examiner SE-402-R	Sound Examiner SE-401-IS	Sound Examiner SE-402-IS
Product No.	SE-401	SE-402	SE-402-R	SE-401 IS	SE-402 IS
DMS Compatible	+	+	+	+	+
Data Logging	+	+	+	+	+
External AC/DC Output	+	+	+		
Serial Printing for SoundPatrol Feature	+	+	+		
Class/Type 2 Accuracy		+	+		+
Class/Type 1 Accuracy	+			+	
Remote Capability with Removable Preamp	+		+		
Intrinsic Safety Approval				+	+

## Detection Management Software

Designed for dosimetry, sound level measurements, heat stress assessments and environmental monitoring, this advanced software helps safety and occupational professionals:

- + Configure instrumentation and save pre-configured setups
- + Retrieve, download, share, and save instrument data
- + Create charts, tables, and reports to intuitively interpret your measurements
- + Export and share recorded results



The software integrates with TSI Quest Detection Solutions data logging instruments and will help you improve both operating efficiency

# SPECIFICATIONS

## SOUND EXAMINER SOUND LEVEL METERS SE-400

### Measurements

Parameters	SPL, $L_{Max}$ , $L_{Min}$ , $L_{Pk}$ (peak), $L_{EQ}$ / $L_{AVG}$ , $L_E$ , Elapsed Time
Peak and Frequency Weighting	A, C, Z
Response Time	Fast and Slow
Ranges	110 dBA total dynamic measurement range. Overall range 30 – 140 dBA (single range)
Max Peak Level	143 dBA (sampled peak)
Exchange Rates	3, 4, 5 dBA
Status Indicators	Run, Stop, Battery Status, OL (overload), UR (under-range), Run-Time, Locked Status

### Physical

Size	11.2" (L) x 2.8" (W) x 1.3" (D) / 28.4 cm (L) x 7.1 cm (W) x 3.3 cm (D) (with preamp and microphone)
Weight	SE-401 model: 12.9 oz / 367.5 g (with preamp and microphone) SE-402 model: 13.4 oz / 380.5 g (with preamp and microphone) SE-401-IS model: 14.5 oz / 410 g (with preamp and microphone) SE-402-IS model: 14.5 oz / 410 g (with preamp and microphone)
Housing	ABS Polycarbonate IP65. (Enclosure rated to IP65. Microphone and external connectors not IP rated.)
Tripod Mount	Standard photographic mount on backside accepts 1/4" – 20 screw threads
Drop Protection	Minimum 2 meters onto concrete, 2 times on each face. Acceptable microphone damage.

### Environmental

Operating Temperature	14 °F to 122 °F (-10 °C to 50 °C)
Humidity	0 to 90% RH, non-condensing
Storage Temperature	-4 °F to 140 °F (-20 °C to 60 °C)
Atmospheric Pressure	Operating: 80 to 110 kPa Storage: 50 to 150 kPa

### Power / Electrical Characteristics

Battery	Lithium Polymer: 2500 mAHr for standard models / 1500 mAHr for IS models, rechargeable Run-Time: 18 hours minimum (excluding the backlight) for standard models / 8 hours for IS models
Battery Life	3 years or 500 cycles (service replaceable)
Battery Charge	USB charger is provided with instrument. Battery charge time: 8 hours (approx.) 2MB (34 days at 1-minute logging)
Internal Memory	USB Interface
Communications	Class/Type 1 Precision QE4936 microphone
Standard Microphones	Class/Type 2 General QE7052 microphone
Preamplifier	Preamp directly accepts 1/2" (13.2 mm) microphone
Remote Cable	Drives up to 50 ft (15 m) of cable with negligible signal loss (not available on IS)

### Ports and Connections

AC/DC Output	3.5 mm stereo (tip – AC, center ring – DC, ring – Gnd); not applicable to IS models
I/O Connector	RS-232 (I/O connector not applicable to IS models)
USB	Conforms to USB 2.0, mini-USB connector

### Conformance to Standards

IEC 61672-1 (2002)	Electroacoustics, Sound Level Meters, Part 1: Specifications
ANSI S1.43-1997 (R2007)	American National Standards: Specifications for Integrating Averaging Sound Level Meters
ANSI S1.4-1983 (R2006)	Specifications for Sound Level Meters
CE Mark	Self Certified
Intrinsic Safety Standards (SE-401 IS and SE-402 IS models)	Contact factory for detailed information

Specifications are subject to change without notice.

Quest is a trademark, and TSI and the TSI logo are  
registered trademarks of TSI Incorporated.



TSI Incorporated - Visit our website [www.tsi.com](http://www.tsi.com) for more information.

<b>USA</b>	<b>Tel:</b> +1 800 874 2811	<b>India</b>	<b>Tel:</b> +91 80 67877200
<b>UK</b>	<b>Tel:</b> +44 149 4 459200	<b>China</b>	<b>Tel:</b> +86 10 8219 7688
<b>France</b>	<b>Tel:</b> +33 1 41 19 21 99	<b>Singapore</b>	<b>Tel:</b> +65 6595 6388
<b>Germany</b>	<b>Tel:</b> +49 241 523030		



Distributed by:  
Air-Met Scientific Pty Ltd

Air-Met Sales/Service	Air-Met Rental
P: 1800 000 744	P: 1300 137 067
F: 1800 000 774	E: <a href="mailto:hire@airmet.com.au">hire@airmet.com.au</a>
E: <a href="mailto:sales@airmet.com.au">sales@airmet.com.au</a>	W: <a href="http://www.airmet.com.au">www.airmet.com.au</a>