

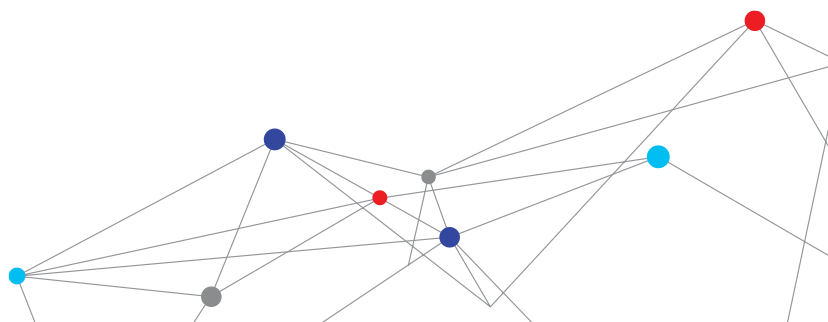
THE EDGE PERSONAL NOISE DOSIMETER

The TSI Quest™ Edge Personal Noise Dosimeter is a comfortable, compact dosimeter that easily mounts to your shoulder. The Edge 5 model offers three independent dosimeters that can simultaneously measure against separate industry standards, all in one compact unit.



Features and Benefits

- + Compact, 3-ounce (85 grams) unit mounts easily to the shoulder
- + Large display with easy-to-use interface provides crucial information at a glance
- + Choose from three independent dosimeters that can simultaneously measure against separate industry standards, all in one compact unit
- + MSHA, SIRA (ATEX), CSA (US/Canada) and Simtars (iECEx) Intrinsic Safety Approvals



DESIGNED FOR EXCEPTIONAL EASE OF USE



LED Dose Indicator

- + LED indicator can be programmed to flash when dose level has been exceeded
- + Helps safety manager and employees easily identify who has reached their daily maximum noise dose exposure

Three Independent Dosimeters

- + Edge eg5 enables simultaneous measurement against as many as three industry standards (ex: OSHA PEL, OSHA HC, ACGIH)
- + Saves time and cost by reducing the need for multiple sampling surveys

Display with Lockout Ability

- + Easy-to-read design enables workers to monitor their own noise exposure. If desired, unit can be set to inhibit display, for easier testing and verification
- + Provides safety professionals the options needed to achieve compliance with hearing protection standards

OTHER FEATURES

Efficient Setup

- + Infrared communication port to EdgeDock provides quick USB connection to the Detection Management Software
- + Helps safety professional easily setup one or more Edge dosimeters

Contoured shoulder mount

- + Ergonomically designed and comfortable; weighs just 3 oz
- + Lightweight and unobtrusive design assures comfort

Intrinsic safety approvals

- + The Edge eg5 carries intrinsic safety approvals from MSHA, SIRI (ATEX), CSA (US and Canada) and Simtars (IECEX)
- + Monitoring can be safely performed in potentially hazardous environments where devices must be certified

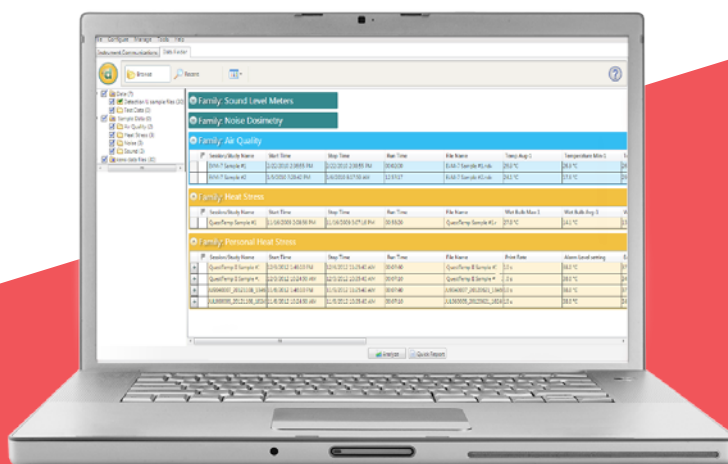
CHOOSE THE MODEL THAT BEST MEETS YOUR NEEDS

| | Edge 4 Noise Dosimeter | Edge 5 Noise Dosimeter |
|-------------------------------|------------------------|---|
| Product No. | eg4-D | eg5-D |
| Data Logging | + | + |
| Battery Life | 60+ hours | 40 hours |
| Lock Out Security Function | + | + |
| LED Dose Indicator | + | + |
| No. of Independent Dosimeters | 2 | 3 (third dosimeter enabled through DMS software) |
| IP Rating | IP-65 | IP-65 |
| MSHA Approval | | + |
| Intrinsic Safety Approval | | + |

Detection Management Software

Designed for dosimetry, sound level measurements, heat stress assessments and environmental monitoring, this advanced software helps safety and occupational professionals:

- + Configure instrumentation and save pre-configured setups
- + Retrieve, download, share, and save instrument data
- + Create charts, tables, and reports to intuitively interpret your measurements
- + Export and share recorded results



The software integrates with TSI Quest Detection Solutions data logging instruments and will help you improve both operating efficiency

SPECIFICATIONS

THE EDGE PERSONAL NOISE DOSIMETER

Functional Requirements Include

| | |
|-----------------|--|
| Microphone | 1/4 inch prepolarized condenser (electret) field replaceable threaded microphone |
| Measuring Range | 70dB - 140dB |
| Windscreen | Rugged foam permanently attached to a threaded mount for maximum protection |

Dosimeter

eg4 has two independent dosimeters. eg5 has three independent dosimeters.
Third dosimeter is enabled through Detection Management Software.

| | |
|------------------------------|--------------------------------------|
| Independent Thresholds | Selectable from 70dB to 90dB or none |
| Independent Exchange Rates | 3dB, 4dB or 5dB for each dosimeter |
| Independent Criterion Levels | From 70dB to 90dB in 1dB increments |

Measurement Settings

| | |
|---------------------|---------------|
| RMS Range | 70dB to 140dB |
| RMS Weighting | A or C |
| RMS Time Response | Fast or Slow |
| Frequency Weighting | A, C, Z |

Peak Detector

| | |
|----------------|--|
| Peak Range | 110dB to 143dB |
| Peak Weighting | Selectable C or Z for eg4; Selectable A, C, or Z for the eg5 model (Peak is independent of the RMS dosimeter settings) |

Displayed Data / Values

| | |
|---|------------------------|
| + L_{AVG} or L_{EQ} | + Current Date |
| + Exposure | + L_{C-A} (eg5) |
| + SPL | + Max Level |
| + Min Level | + SEL (L_{EP}) |
| + Dose | + Threshold (TR) |
| + TWA | + Peak Level |
| + Upper Limit (UL) | + Run Time |
| + Identity Field (assigns a custom name to The Edge) | + Projected Dose (eg5) |

Displayed Status Indicators

| | |
|--|-----------------------|
| + Battery | + Memory |
| + Run/Pause | + Overload Indication |
| + Dose Exposure Indicator (Multicolored LED, user selectable) | |

Docking Station: Single and Five Bay Versions

| | |
|---------------------|--|
| Communications | Via the EdgeDock and USB to PC |
| Typical recharge | 2 to 4 hours |
| Complete instrument | Fits neatly into EdgeDock without removing mounting device |

Specifications are subject to change without notice.

Quest is a trademark, and TSI and the TSI logo are registered trademarks of TSI Incorporated.

Power / Electrical Characteristics

| | |
|-----------------|--|
| Battery | Lithium Polymer (Flat cell) |
| Battery Life | eg4 model 60+ hours, eg5 intrinsically safe 40 hours nominal without LED activated |
| Battery Charge | Quick charge in EdgeDock in 2 to 4 hours. Recommended daily download data with simultaneous battery charging for maximum efficiency |
| Memory Capacity | 180 hours |
| Communications | Short haul serial Infrared (SIR) via the EdgeDock |

Standards

| | |
|---|--|
| ANSI S1.25 Personal Noise Dosimeters | |
| IEC61252 Personal Sound Exposure Meters | |
| Intrinsic Safety (eg5) | + EN 60079-0:2006, EN 60079-11:2007, EN 60079-26:2007 + IECEx certification number: SIM 08.0012 + ATEX Directive 94/9/EC for use in Potentially Explosive Atmosphere xcertification number: Sira 09ATEX2269 + CSA International (US and Canada) certificate number: 2283414 + MSHA Approval number: 18-A100008-0 |

Physical Characteristics

| | |
|---|---|
| Weight | 3 ounces (85 grams) |
| Size | 3.5" long x 2.1" wide x .75" thick (88mm x 53mm x 19mm), eg5 is .82" (21mm) thick |
| Case Material | Engineered Polymer |
| IP Rated | 65 |
| Keypad | 4 keys - Up Arrow, Down Arrow, Run/Stop, On/Off, Enter |
| Display | 128x64 LCD |
| RoHS Compliant | |
| Lockable Windscreen | |
| Alligator Clothing Clip / Suspender Clasp | |

Environmental Characteristics

| | |
|-----------------------------|------------------------------------|
| Operating Temperature Range | 14 °F to 122 °F (-10 °C to 50 °C) |
| Storage Temperature Range | -13 °F to 140 °F (-25 °C to 60 °C) |
| Humidity Range | 0 to 95% Non-Condensing |

Additional Features

| | |
|---|---|
| Device Setup | Easy, quick setup via DMS software in Chinese, Czech, English, French, German, Italian, Japanese, Korean, Norwegian, Polish, Portuguese, Russian, Spanish, Swedish, and Turkish |
| Data Logging | L_{AVG} or L_{EQ} , Max, Peak and Overload Indication at one minute intervals |
| Calibration times displayed | |
| Lock out security function (multilevel) | |



TSI Incorporated - Visit our website www.tsi.com for more information.

| | | | |
|----------------|-------------------------------|------------------|------------------------------|
| USA | Tel: +1 800 874 2811 | India | Tel: +91 80 67877200 |
| UK | Tel: +44 149 4 459200 | China | Tel: +86 10 8219 7688 |
| France | Tel: +33 1 41 19 21 99 | Singapore | Tel: +65 6595 6388 |
| Germany | Tel: +49 241 523030 | | |



Distributed by:
Air-Met Scientific Pty Ltd
Air-Met Sales/Service
P: 1800 000 744
F: 1800 000 774
E: sales@airmet.com.au

Air-Met Rental
P: 1300 137 067
E: hire@airmet.com.au
W: www.airmet.com.au