

EVM

ENVIRONMENTAL MONITORS



Distributed by:
Air-Met Scientific Pty Ltd
Air-Met Sales/Service
P: 1800 000 744
F: 1800 000 774
E: sales@airmet.com.au

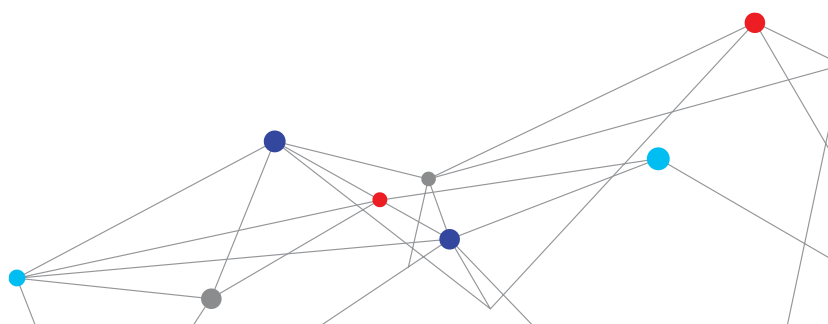
Air-Met Rental
P: 1300 137 067
E: hire@airmet.com.au
W: www.airmet.com.au



The TSI Quest™ EVM Environmental Monitors simultaneously measure particulates and gas concentration in real-time. These monitors measure select toxic gases, volatile organic compounds (VOCs), relative humidity, temperature and air velocity.

Features and Benefits

- + Particulate, gas and photoionization detector (PID) measurement from a single device
- + Less equipment to carry to job site; compact, user-friendly design
- + 90-degree light scattering laser photometer measures particulates in real-time
- + Proprietary technology for selecting particulate settings; no need for external cyclones
- + Built in sampling pump allows for gravimetric analysis
- + Large, easy-to-read display with trend graphing of measurements
- + Time history data logging and compatibility with Detection Management Software makes analysis efficient



DUAL-ANALYSIS

OUTSTANDING EFFICIENCY AND VALUE

SIMULTANEOUS MEASUREMENT

- + Measures particulate mass concentrations (0.1-10 μm), select toxic gases, select volatile organic compounds, carbon dioxide, relative humidity, temperature, and air velocity (with purchase of optional accessory).
- + Helps control equipment costs, by combining three instruments into one.



Built-in sampling pump

- + Allows user to easily capture particulate samples for on/off-site analysis.
- + Identify and confirm particulate concentration in question.

Rotary impactor

- + Proprietary "dial-in" technology enables fast, easy selection of 4 different particulate size settings.
- + Eliminates the need to switch out cyclones for different measurement apertures.

90° light-scattering laser photometer

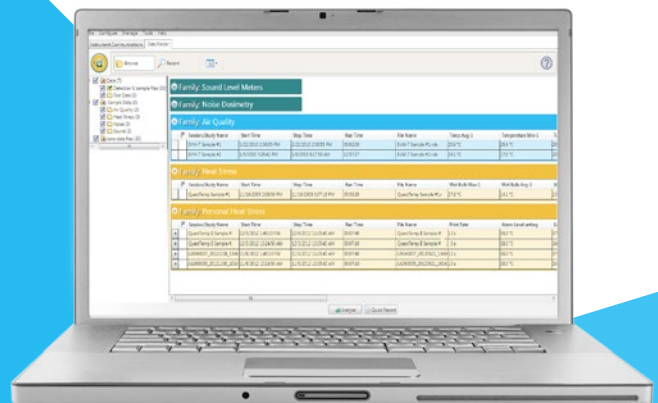
- + Enables real-time measurement of particulates.

Detection Management Software

Designed for dosimetry, sound level measurements, heat stress assessments and environmental monitoring, this advanced software helps safety and occupational professionals:

- + Configure instrumentation and save pre-configured setups
- + Retrieve, download, share, and save instrument data
- + Create charts, tables, and reports to intuitively interpret your measurements
- + Export and share recorded results

The software integrates with TSI Quest Detection Solutions data logging instruments and will help you improve both operating efficiency and reporting in acoustics, heat stress and environmental monitoring.



CHOOSE THE MODEL THAT BEST MEETS YOUR NEEDS

	EVM-7 Indoor Air Quality/ Particulate Monitor (eliminates the need for separate meters)	EVM-4 Indoor Air Quality Monitor (no particulates)	EVM-3 Particulate Monitor (no Indoor Air Quality Monitor)
Temperature	+	+	+
Relative Humidity	+	+	+
Air Velocity (with purchase of optional accessory)	+	+	+
Particulates (mass concentration)	+		+
Toxic Gas (choose from nine sensors)	+	+	
Carbon Dioxide	+	+	
Select Volatile Organic Compounds	+		

SENSOR SPECIFICATIONS

Method	Base Units	Display Resolution	Display Range	Accuracy Repeatability	Method	Base Units	Display Resolution	Display Range	Accuracy Repeatability
VOC: 10.6eV Photoionization Detector					Particulates				
Low Sensitivity PID	select ppb or mg / m ³	0.01	0.00 - 2,000	+/-5% / 2%*** at calibration level	90° Light Scattering / Integrating Photometer	mg / m ³	0.001	0.000 - 200.0	+/-15% (rel ARD*)
High Sensitivity PID	select ppb or µg / m ³	1	0 - 50,000	+/-5% / 2%*** at calibration level		µg / m ³	1	0 - 20,000	+/-15% (rel ARD*)
CO₂					Particulates Size Range	µm	N/A	0.1 - 10	**
NDIR (Non-Dispersive Infrared)	ppm	1	0 - 5,000 ppm; autoranging (Noncondensing)	+/-100 ppm @20 deg C, 1 bar pressure at 2,000 ppm applied gas	Electrochemical Sensor				
Temperature					CO - Carbon Monoxide Sensor	ppm	1	0 - 1,000	+/-5% / 2% of signal
Junction Diode	deg C	0.1	0.0 - 60.0	+/- 1.1 deg C	Cl ₂ - Chlorine Sensor	ppm	0.1	0.0 - 20	+/-5% / 2% of signal
	deg F	0.1	32.0 - 140	+/- 2 deg F	EtO - Ethylene Oxide Sensor	ppm	0.1	0.0 - 20	+/-5% / 2% of signal
Relative Humidity					HCN - Hydrogen Cyanide Sensor	ppm	0.1	0.0 - 50	+/-5% / 2% of signal
Capacitive	% humidity	0.1	0.0 - 100	+/-5% RH* of signal between 10%-90%	H ₂ S - Hydrogen Sulfide Sensor	ppm	1	0.0 - 500	+/-5% / 2% of signal
Air Velocity					NO - Nitric Oxide Sensor	ppm	0.1	0.0 - 100	+/-5% / 2% of signal
Omni-directional Heated Thermistor Windprobe	meter/sec	0.1	0.0 - 20	+/-0.12 m/s + 4.5% of signal	NO ₂ - Nitrogen Dioxide Sensor	ppm	0.1	0.0 - 50	+/-5% / 2% of signal
	feet/min	1	0 - 3940	+/-23.6 ft/min + 4.5% of signal	O ₂ - Oxygen Sensor	%	0.1	0.0 - 30	+/-5% / 2% of signal
					SO ₂ - Sulfur Dioxide Sensor	ppm	0.1	0.0 - 50	+/-5% / 2% of signal

SPECIFICATIONS

EVM ENVIRONMENTAL MONITORS

General

Display Languages	Chinese, Czech, English, French, German, Italian, Japanese, Korean, Norwegian, Polish, Portuguese, Russian, Spanish, Swedish, and Turkish
User Interface	10 pushbuttons and 4 softkeys, menu driven
Display Type	Transreflective 128 x 64 LCD with backlighting
Software Compatibility DMS	TSI Quest Detection Management Software
Standards	CE Mark and RoHS compliant
Particulate Impactors Size Fractions	PM2.5, PM4, PM10 or TSP (within the instrument's measurement range)
Flow Rate	1.67 L/min

Displayed Data

Measurements	Level, Minimum, Maximum, Average, Short-Term Exposure Level (STEL), Time Weighted Average (TWA)
Real-Time Measurement	Once per second display update rate
Time History Data	
Logging Intervals	Seconds: 1, 5, 15, 30 / Minutes: 1, 5, 10, 15, 30, 60
Trend Graphing Intervals for All Parameters	Minutes: 1.5, 3, 15 / Hours: 1.5, 3, 8, 12, 24
Status Indicators	Battery, Run, Stop, Overload and UnderRange
Averaging Time	1 to 30 seconds

Physical Characteristics

Size	7.5" x 7.5" x 2.75" (19 cm x 19 cm x 7 cm)
Weight	2.9 lb (1.3 kg)
Housing	Static dissipative ABS Polycarbonate housing
Tripod Mount	Standard photographic mount on bottom, 1/4" - 20 screw heads

Operating Conditions

Temperature Range	32 °F - 122 °F (0 °C to 50 °C)
Pressure Range	65 kPa to 108 kPa
Relative Humidity Range	10% to 90% non-condensing

Storage Conditions

Temperature	-4 °F to 140 °F (-20 °C to 60 °C)
Humidity	0% to 95% RH, non-condensing

Electrical Characteristics

Intelligent Sensors	Auto-detectable when inserted at power-off mode
Battery Pack	Rechargeable lithium-ion
Battery Life	Minimum of 8 hours under continuous operation
External DC Power Input	10 to 16 Volt power inlet (nominal 12V DC) 1.5A
Power Adapter	Universal AC adapter 100 to 240 Volt AC, 50-60 Hz

* ARD - Arizona Road Dust, RH - Relative Humidity

** The photometer can detect particulates up to 100 µm; however, accuracy is reduced for sizes greater than 10 µm.

*** Relative Isobutylene

Specifications are subject to change without notice.

Quest is a trademark, and TSI and the TSI logo are registered trademarks of TSI Incorporated.



UNDERSTANDING, ACCELERATED

TSI Incorporated - Visit our website www.tsi.com for more information.

USA	Tel: +1 800 874 2811	India	Tel: +91 80 67877200
UK	Tel: +44 149 4 459200	China	Tel: +86 10 8219 7688
France	Tel: +33 1 41 19 21 99	Singapore	Tel: +65 6595 6388
Germany	Tel: +49 241 523030		



Distributed by:
Air-Met Scientific Pty Ltd

Air-Met Sales/Service
P: 1800 000 744
F: 1800 000 774
E: sales@airmet.com.au

Air-Met Rental
P: 1300 137 067
E: hire@airmet.com.au
W: www.airmet.com.au